

THE CHURCH AT PERTON

**A Local Ecumenical Partnership with the United Reformed Church
Within the United Benefice of Tettenhall Wood and Perton**



Our Mission Statement

Being God's Family

Serving Our Village

Sharing the Love of Jesus



CONTENTS

Bishop Michael's Statement	3
Commendation	4
Church Leadership	5
The Challenge	6
Role Description	7
Person Profile	8
Services and Statistics	9-11
Church Activities and Programmes	12-13
Children and Young People	14-15
Shaping for Mission	16-17
Mission Action Plan	18
Communication and Policies	19
Church Family/Fellowship	20
The Church Building	21-22
The Vicarage	23
Church Finances and Accounts	24-27
Benefice & Team Ministry	28-31
Perton - village and surrounds	32-34
Perton Parish – demographics	35
Perton Parish - ecclesiastical and area maps	36
Trysull Deanery information - Rural Dean	37

The Rt Revd Dr Michael Ipgrave

Bishop's House, 22 The Close, Lichfield WS13 7LG

T: 01543 306001. E:

bishop.michael@lichfield.anglican.org



THE BISHOP OF LICHFIELD

A word of welcome to the Diocese of Lichfield

Cradled at the intersection of the Midlands and the North, and the interface between England and Wales, the Diocese of Lichfield is the ancient centre of Christianity in what was the Kingdom of Mercia.

We are rightfully grateful for the inheritance we have from our first bishop St Chad that leads us to focus on Discipleship, Vocation and Evangelism as we live and serve among the communities of Staffordshire, northern Shropshire and the Black Country.

By answering God's call to minister in Lichfield Diocese you will benefit from being part of a wide family, mixing with people serving in a variety of contexts – from the grittiest inner-city neighbourhoods of Stoke and the Black Country, to the leafiest rural parishes of Staffordshire and Shropshire, to the sparsest upland communities of the Staffordshire Moorlands and Welsh Borders.

And we embrace the widest spectrum of church traditions – evangelical and catholic, liberal and conservative, choral and charismatic – as we journey together in mission. As a colleague recently put it, it is our goal to be a 'spacious and gracious diocese'.

It is my determination and that of my episcopal colleagues that your calling to minister with us in Lichfield Diocese will be a time of encouragement, fulfilment, challenge and joy. You will not be alone in your ministry; as part of the wider team our colleagues among the diocesan staff keenly bring their various specialisms both spiritual and practical to offer resource and support as you serve our parishes, fresh expressions, schools and chaplaincies.



The Rt Revd Dr Michael Ipgrave OBE

Bishop's House, 22 The Close, Lichfield, WS13 7LG

Tel: 01543 306 031, Email: bishop.michael@lichfield.anglican.org

Web: www.lichfield.anglican.org

Commendation

Thank you for your enquiry in respect of the vacancy for Team Minister in the Parish of Perton.

We commend this profile to you, which we fully endorse as being an accurate account of where we are on our journey of faith in this church. We hope you will feel called to explore this position further.

The post offers exciting opportunities for the right candidate:

- To have responsibility for a single church, with the support of a wider benefice team
- To maintain and develop worship respecting the traditions of both partners of the LEP – the United Reformed Church and the Church of England
- To further the mission of a church located right in the heart of its community

We pray for God's blessing and guidance, to help and inspire you as you explore this opportunity.

Rev Phil Wootton - Team Rector

Joanna Bucknall - Churchwarden David Bickley - Churchwarden

Church Leadership Team

We operate with a recognised leadership team, also serving as a Standing Committee (by agreement of the ECC), which meets regularly with the Minister to make decisions on day-to-day matters; to act as a sounding board and a means of sharing sensitive information in confidence and to pick up the practical tasks associated with the everyday running of the church.

The leadership team currently comprises the two Churchwardens, an honorary Churchwarden (previous Churchwarden), the Church Secretary, and the Church Treasurer. The Officers work well together, continuing to meet fortnightly in the interregnum.

Our Ecumenical church Council (ECC) meets five times per year as standard, with additional dates if needed. It also has at least one 'away day/morning' per year if an issue requires more reflection or consideration than can be given at regular meetings. ECC fulfils the role of a PCC and the requirements of a URC Elders Meeting. Quarterly Church Meetings also take place in line with URC tradition.



David Bickley
Churchwarden



Jo Bucknall
Churchwarden



Phil Needham
Treasurer



Sue Ridley Church Secretary



Helena Payne Hon.Churchwarden

The Challenge

Leading

the Church Council in Mission Action Planning to share the love of Jesus with our community.

Building

on our work with young people in church, in the three Perton schools, and in the wider community, so that they actively want to explore what it means to know Jesus.

Developing

intentional ways of serving our village; engaging with all who live here, sharing the love of Jesus in word and deed.

Engaging

the congregation in the relevance of our faith to wider social justice and environmental issues.

Encouraging

us to continue exploring ways in which we can strengthen our discipleship.

Supporting and Guiding

existing and new lay ministry within the church.

Understanding

the requirement to be sensitive to our ecumenical partnership with the United Reformed Church.

Role Description

We are looking for someone who is able to

Develop practical and effective ways of increasing outreach and evangelism,
especially in reaching families and young people

Build on and develop young people's work

Recognise 'Church on Sunday' no longer works for many people

Continue to maintain and develop community links and
be a visible presence in the community

Maintain and build on the existing strengths within our church

Motivate and encourage leadership

Be organised and plan ahead effectively

Be proactive in using social media

Be a strong and gentle leader

Work collaboratively within the church,
with outside organisations and other local churches

Person Profile

We are looking for someone who will:

- Have a strong personal faith
 - Be pastorally minded
 - Demonstrate empathy
- Be open, approachable and flexible
- Use a creative and engaging approach to worship, preaching and teaching
- Have an awareness of social justice issues and individual responsibility
 - Be a good communicator and listener
- Recognise the changing structures of family life
- Have a heart for families and young people
 - Enjoy social occasions
 - Have a sense of humour
- Manage their time effectively

Services

Sunday Morning Services 10.30am

Holy Communion is usually celebrated twice a month, alternating between Anglican and URC traditions if possible, with Morning Worship being used on the other two Sundays. 5th Sundays are used to experience a range of worship styles. All our services are live-streamed on our YouTube channel.

Kids Cafe (Junior Church) meets on the 3rd Sunday of each month.

Hymns are usually taken from Mission Praise, although other sources of hymns and modern worship songs are incorporated when required. Words are projected onto four overhead screens together with the liturgy and responses. The congregation enjoys singing a wide variety of music.

Baptisms are usually during the morning service.

Evening Services

An informal, lay led evening service, Hungry, is held at 6pm on the third Sunday of the month.

Midweek

There is a midweek communion service at 11.00am on the 1st and 3rd Wednesday of each month.. Prior to the interregnum, midweek communion services were also held on 2nd and 4th Wednesdays at 10.45am at nearby Corsers Court Retirement Complex. During the interregnum, we have only been able to continue with the 4th Wednesday.

Occasional Services

Evenings: Ash Wednesday, Holy Week reflections, Maundy Thursday Communion, Good Friday reflective service, Ascension Day. Weekly Advent Reflections, Carol Service, Crib and Christingle Service at 4pm on Christmas Eve, and Midnight communion on Christmas Eve.

Remembrance Sunday begins in church at 10am and leads out to the memorial stone at 10.45am for the Act of Remembrance.

Remembrance Day November 11th (when it falls on a weekday) at the memorial stone for Perton Middle School pupils.

We also have an annual Memorial Service, annual Pet Service, Compassion Sunday, Eco Church services, Parish Council Civic Service and Easter, Harvest and Christmas services for the two First schools.



Memorial Stone



Perton First School in Church



Pet Service

Services are generally led by a Minister, other Benefice Ministers, Licensed Lay Preachers, Lay Leaders. We also have an Authorised Lay Minister. Lay members of our congregation play an active part in many aspects of worship preparation and leadership.

It is usual practice for The Minister and Lay Preachers to liaise regularly in order to compile the leading and preaching rotas for the following quarter. The Minister also plays a supporting role in guiding and supervising Lay preachers as required. Bible Reading and Intercessions rotas are prepared by lay members.

The variety of worship styles, with different leaders and preachers, has always been a feature of The Church At Perton, adding diversity and enrichment to our worship life.

Statistics

There are 84 on the current Anglican Electoral Roll.

Average Attendance	Adults	Children
Sunday Morning	50	3
Easter Sunday	60	3
Christmas Eve Crib & Christingle Service 4pm	95	51
Midnight Communion	25	
Christmas Morning	25	
Hungry 6pm	16	
Midweek Communion	10	
Remembrance Sunday in church additional people at the Stone	130 80	40

Occasional Services	2023	2022
Baptisms	6	9
Funerals In church	2	9
Funerals Crem only	11	16
Weddings	0	0

Church Activities and Programmes

The following is a snapshot of current activities in the church and parish. There are opportunities to add to or develop other areas.

Weekly

The church is open weekdays during term time, for private prayer and Warm Place of Welcome. We have church sitters to greet people.

Two House groups.

Rainbows. Brownies & Guides meet in the building during term time.

Monthly

Midweek communion, 1st and 3rd Wednesdays.

Well Being Café on 2nd Thursday of each month. This incorporates Dementia Friendly Church and Warm Place of Welcome.

Mothers' Union meeting.

Seasonally

Men's Breakfast and Worship.

Holiday Club –a one day activity for children aged 5 -11 yrs during main school holidays.

Perton Carnival and Perton Christmas Fair: building open with stalls and refreshments.

Christian Aid Week collecting box.

Church members 'Open Gardens' during the summer.

Lent and Advent courses

Christmas Carols at Sainsbury's and The Wrottesley pub.

.

Miscellaneous

A member of our congregation is an Advocate for **Compassion** through which many children are currently sponsored by members of our Church family.

There is an active **Mothers Union** group which meets regularly, leads or participates in an annual service of Morning Worship and participates in annual MU campaigns, for example the 'No More 1 in 3' awareness campaign against gender based violence.

We are an active **Fairtrade Church**, using FairTrade products in the kitchen whenever possible.

We are a **Dementia Friendly Church**, and have a dedicated church member acting as our rep for the Dementia Friendly Church scheme.

We are an **Eco Church** registered with the UK A Rocha scheme. We currently hold a Silver Eco Award, and continue to work towards achieving Gold, across the five categories of Lifestyle, Worship, Community and Global Engagement, Land, and Buildings, We obtain our toiletries and cleaning supplies through refillable closed loop returns where possible, to minimize the use of plastic containers. We do not use disposable plastics if there is an alternative. The Eco Team have planned and led, or participated in, Eco focused Worship with invited guest speakers, planned and led a Fairtrade Service. Some members of the Eco team also operate as the church gardening team. Over the past few years the front and side borders of the building have been dug out and replanted with pollinator friendly planting, large planters have been installed in the church courtyard along with a living wall. We also have links to Wild About Perton, a local organization championing environmental awareness.

We are twinned with St Mary's Church, part of the Carrigaline Union of Churches in southern Ireland and in 2023 a group of our members visited them for a weekend, as part of their bi-centennial celebrations. Virtual pulpit swaps have taken place. The twinning initiative was undertaken by our previous incumbent and the Rector of St. Mary's, who is about to retire. We hope there will be a way to continue an active link, should the parishioners of St. Mary's wish. There is also a Diocesan link between Lichfield Diocese and the Diocese of Cork, Cloyne & Ross.

One of our Church members is active in missionary work, and regularly visits to help build homes and schools in Uganda, currently through **Inspired Hope**, many of our church family financially support this project.

CHILDREN AND YOUNG PEOPLE

We have a monthly Sunday School called KIDS CAFÉ. This was launched following covid lockdown and has been growing in numbers ever since.

We meet on the 3Rd Sunday of every month, including school holidays. We start at 10.30am and finish at noon. Children can attend even if their parents aren't in church as a detailed registration form is completed.

We enjoy breakfast together and then read a bible reading from the lectionary. We use the material from Roots on the web. We have various activities including drama, puppets, craft, activity sheets, prayer time, games and cooking.

We have also enjoyed Lego sessions and have had members of the congregation speak to us about Fairtrade, 'Good news for everyone' (Gideons) and help us make bread.

We have 18 children on register and have about 12 children attend regularly.

We hand deliver an invitation each month, a week before KIDS CAFÉ, to every child so they know what we'll be learning about.

We have a fabulous team of 8 church members who help on a rota system. We meet a week before for prayer and planning time.

When children attend church on other Sundays we provide an activity pack for them to use during the service..

If pre-school children and babies attend with parents or carers, we provide a selection of crèche toys in our small hall so that the parents/carers have a place to relax if needed. We have a changing table in the toilets.

We continue to baptise children of Perton of various ages. We arrange a baptism preparation evening for the parents and Godparents prior to the christening. We retain their details and a follow up letter is sent a few weeks after the baptism and also a card on the first anniversary.

We have a group of church members who have a stroll around Perton each month on the 4th Monday at 2pm. All parents/carers with preschool children are invited to join us with refreshments back at church afterwards. A great chance to chat and build relationships.

We have a monthly Church and Curry which is a group of church members who attend our local curry restaurant the last Wednesday of the month. Our older children have enjoyed attending this, which is great way to get to know them better.

Unfortunately our monthly Teddy Bear Church which met monthly has been put on hold due to lack of numbers as both our First Schools take children from 2 years old in their nursery. If a need is seen this will be re-instated.



Christingle production



Holiday Club



Compassion Map

Shaping for Mission



Many of the 9 aspirations shown above naturally align with our Profile as can be seen in The Challenge and Role Description. Many elements are within our Mission Action Plan, which has been refined and revisited since it was drawn up in 2013.

growing younger – Connection with Schools

We already have connections with the three schools in our village and seek to strengthen and develop these links.

We wish to explore ways in which we might better engage with families living in Perton.

New Disciples

We want to develop practical and effective ways of increasing our outreach and evangelism.

New worshipping communities – we recognise that ‘Sunday means church’ is no longer a good fit for many work patterns and lifestyles. We would like to explore what that might mean for us in terms of developing New Worshipping Communities.

Community Engagement

We are an outward looking church, within the centre of our village, looking for new ways in which we might serve and engage with the people who live here, in mindful and intentional ministry.

We want to maintain and develop community links, exploring new and sustainable ways of being a visible presence in our community.

Mission Action Plan

April 2013

Mission Statement

- After a process of prayerful discernment, the Church At Perton has produced the following mission statement:

***Being God's Family
Serving our Village
Sharing the Love of Jesus***

- These three statements are further explained as follows:

Being God's Family
~ *actively developing our relationships with each other
and continuing our journeys with God*

Serving our Village
~ *actively developing the church as a place of sanctuary for all
and a hub from which to serve our village*

Sharing the love of Jesus
~ *actively involved in sharing the love of Jesus
in word and deed both locally and further afield*

Mission Statement Linked To Denominational Mission Priorities

- The Church At Perton is an LEP between the Church of England (C of E) and the United Reformed Church (URC).
- The following shows how the three mission statements of the Church At Perton fall within the mission priorities of both the URC and the Lichfield Diocese of the C of E.

Lichfield Diocese Priorities

URC Vision 2020 Statements of Mission

being God's family

discovering the heart of God
growing disciples
practising generosity

spirituality & prayer
identity
church growth

serving our village

transforming communities
reaching new generations
practising generosity

community partnerships
hospitality & diversity
justice & peace
integrity of creation

sharing the love of Jesus

transforming communities
reaching new generations
practising generosity
growing disciples

hospitality & diversity
community partnerships
evangelism
church growth
global partnerships
justice & peace

Communication and Policies

Information is distributed by email through a weekly Catch Up sheet, a notice board outside the church, a facebook page, ACNY and our own website. At Christmas, the church distributes 4,500 cards to every home in the village, with details of services and special events. There is a prayer email group for the communication of urgent pastoral needs. In 2020 a Church WhatsApp group was formed, which continues as a means of friendly day to day chat amongst congregation members.

Baptism

As The Parish Church, there are regular requests for Baptism of infants. All families are: seen by the incumbent; attend a baptism preparation course, and are encouraged to attend Sunday worship. The church has a Baptistry. This is used occasionally, at the request of the person coming for baptism, other churches within the Deanery, and by members of Perton Christian Fellowship who worship in the nearby Civic Centre.

Marriage

The church welcomes all applications for Christian marriage. Couples are seen by the incumbent, and this includes discussion of the recommended pastoral issues in the case of remarriage of divorced people. There are very few marriages at the church due to the modern appearance of the church building; the church regularly calls Banns for local residents who wish to marry in adjacent parishes. Over the past few years applications for Banns have been processed by a member of the leadership team.

Funerals

The incumbent of Perton conducts an average of 2 funerals per month. These are usually for residents of the Parish, and most take place at Bushbury Crematorium, in the north of Wolverhampton. Of these, there may be 2 or 3 per year where a service is held at the church. These tend to be funerals of church members, although occasionally a local family will request a church service. The funerals are normally conducted by the incumbent.

Our Church Family/Fellowship

We are an open, friendly, welcoming and warm fellowship.

We enjoy the variety of worship on offer and at the end of services, no-one is in a rush to leave. Most stay for refreshments and a chat, getting to know visitors or newcomers, catching up on family news or asking for and receiving support on a range of matters.

Our pastoral system ensures that we are aware when someone hasn't been for a few weeks whether they are away, affected by illness or unexpected circumstances. During 2020 we set up a church WhatsApp group which was a lifeline for many and kept us feeling connected . This group remains as active as ever, with daily chat, prayer requests, news sharing, and family photos.

The church family is a sociable one, never passing up an opportunity to get together outside of worship times. Day trips, arising from Lent course subjects, have been well supported. Two visits to the Holy Land have been organised over the past decade. We mark national days of celebration by opening our church building for afternoon teas with a short Song of Praise following, and issuing an open invitation to villagers. These occasions are always well-attended.

The church family enjoys meals out, walks, visiting our 'open gardens' during the summer, laughter, prayerful support during difficult times. New attendees speak of the warm welcome they receive and the ease with which they are drawn into the worshipping and social fellowship.

The Church Building

The Church At Perton is situated in the centre of the village and is a modern, multi-purpose building completed in 1982.. We have a main Sanctuary, supplemented, for Sunday worship and other services, by a large hall that opens up to the sanctuary by means of sliding folding doors. This hall is hired during the week by a variety of village organisations. Off the interior vestibule, we also have a second ,smaller hall, modern kitchen facilities, and a vestry.



Interior Vestibule



Jubilee Tea in large hall

There is an entrance lobby from the front doors, male ,female and disabled access toilets are situated in this lobby. Baby changing facilities are available in the female toilets. The building affords level ground floor access throughout. The gas heating system was replaced with electric aircon units in 2023.

We have a Baptistry for baptism by total immersion within the Sanctuary. Also in the Sanctuary, we have a sound system with mixing desk; words and images are projected onto four monitors during our services which are live-streamed. We have a Johannus Digital Organ with twin manual and a base pedal board giving us facility for traditional hymns, nearby mics and music stands allow for a music group with singers for more modern songs.

Altar table – memorial service



At the end of the approach road to the church, there is a small car park for a limited number of cars. To the west of the building, we have an external courtyard, with tarmac surfaced area, for summer activities and community events. The courtyard has large planters, a bespoke mural, a living-wall installation, benches, and parasols for shade on sunny days.



Courtyard is open to passers-by when the weather is clement



Easter tableau in courtyard



Front border

The Vicarage

23 Portrush Road, Perton

An attractive modern house, set back from the road in a quiet cul-de-sac, eight minutes walk from the church. The property has gas central heating and double glazing.

On the ground floor there is a hall, cloakroom (w.c.), purpose built study, lounge with double doors leading to dining room, and fully fitted kitchen with adjacent utility.

On the first floor there are four bedrooms, one of which is en-suite, a bathroom, a hot water cylinder and access to a large loft

There are low maintenance gardens to the front and rear, mainly lawn.

There is a garage attached to the house, parking space for two cars on the drive and adequate frontage in the road for other cars.
The property is well maintained and will be redecorated prior to occupancy.



Church Finances

The requested Central Contributions (relating to 0.5 ministerial posts) to both the Anglican and the URC have been fully paid since the church was built in 1982. The combined total requested in 2023 was £52,426. However, in mid 2023 we became aware that the URC would be unable to provide the usual alternating of a full time minister and indeed had not contributed to the cost of our full time Anglican Minister as had been expected. So our contributions to the URC were substantially reduced. The Requested Contribution for a full time Anglican post will be in excess of £75,000 which will be challenging, however the Diocese are generously allowing us a transitional period to achieve that figure and the congregation have a good track record of meeting such challenges.

In 2023 a surplus income was again showing on the annual accounts. However the income included some £7,800 donations into designated/restricted funds. Consequently, with the tenfold increase in gas costs and remedial work undertaken on the roof and cross there was a small deficit of £90 in unrestricted general funds which has, of course, now been remedied. We are now facing a considerable and challenging increase in the Anglican Common Fund so there is no room for complacency and we are committed to funding the appointment of a full time minister.

There are funds of some £31,000 held at CCLA in London which are part of the Restricted Funds of £25,700 and the Designated Funds of £25,000 raised mainly for the improvements being sought for the more economical and efficient heating of the church building. The heating system was replaced in 2023 with an electric aircon system delivering heat or cooling as required. This system is an 8 year rental and total 24 hour maintenance scheme, after which we own it.

We have used the URC TRIO (The Responsibility Is Ours) presentation as the basis of our regular stewardship campaigns and have achieved excellent results. We tithe 10% of general giving, donations and fundraising to give to charities annually. Church Accounts on following pages.

THE CHURCH AT PERTON

Balance Sheet detailed

	As at 31/12/2023	As at 31/12/2022
Current assets		
6501: Bank current account	16,641.05	13,003.87
6510: CCLA (CBF) deposit account	31,013.21	29,652.47
6515: Discretionary Fund	2,773.37	2,533.37
6565: Trust Fund Deposit	—	—
6590: Cash in hand	205.27	206.21
Total Current assets	50,632.90	45,395.92
Liabilities		
6699: Agency collections	—	—
Total Liabilities	—	—
Net Asset surplus (deficit)	50,632.90	45,395.92
Reserves		
Excess / (deficit) to date	5,236.98	(8,589.67)
Z01: Starting balances	45,395.92	53,985.59
Total Reserves	50,632.90	45,395.92

Represented by Funds		
Unrestricted	(90.71)	2,015.57
Designated	24,991.62	19,521.07
Restricted	25,731.99	23,859.28
Endowment	—	—
Total	50,632.90	45,395.92

THE CHURCH AT PERTON

Analysis of income and expenditure
Selected period: 01 January 2023 to 31 December 2023

	Unrestricted	Designated	Restricted	Endowment	This year	Total Last year
Receipts						
<i>Planned giving</i>						
0101 - Gift Aid - Bank	40,895		1,200		42,095	40,001
0201 - Other planned giving	620				620	100
<i>Planned giving Totals</i>	41,515		1,200		42,715	40,101
<i>Collections and other giving</i>						
0301 - Loose plate collections	4,710				4,710	3,403
0401 - Regular gift days	5,803				5,803	5,625
<i>Collections and other giving Totals</i>	10,513				10,513	9,028
<i>Other voluntary receipts</i>						
0550 - Donations appeals etc	2,418	5,500	1,862		9,781	2,175
0701 - Legacies			500		500	2,000
0801 - Recurring grants						600
08A1 - Non-recurring one-off grants	5,000				5,000	950
<i>Other voluntary receipts Totals</i>	7,418	5,500	2,362		15,281	5,725
<i>Gift Aid recovered</i>						
0601 - Tax recoverable on Gift Aid	11,688				11,688	10,808
<i>Gift Aid recovered Totals</i>	11,688				11,688	10,808
<i>Other receipts</i>						
0901 - Other funds generated	342	161	813		1,317	2,500
<i>Other receipts Totals</i>	342	161	813		1,317	2,500
<i>Activities for generating funds</i>						
1225 - MISC FUND RAISING						252
1240 - Church hall lettings - fund raising	5,689				5,689	5,320
<i>Activities for generating funds Totals</i>	5,689				5,689	5,572
<i>Investment Income</i>						
1020 - Bank and building society interest	1,360				1,360	283
<i>Investment Income Totals</i>	1,360				1,360	283
<i>Receipts from church activities</i>						
1101 - Fees for weddings and funerals	1,281	60	60		1,401	2,456
1230 - Church hall lettings - objectives	160				160	
<i>Receipts from church activities Totals</i>	1,441	60	60		1,561	2,456

There may be minor discrepancies in the totals if the pence are not being shown

	Unrestricted	Designated	Restricted	Endowment	This year	Total Last year
Receipts Grand totals	79,969	5,721	4,436		90,127	76,475
Payments						
<i>Missionary and Charitable Giving</i>						
1801 - Giving to missionary societies		3,000			3,000	1,000
1830 - Giving - relief and development agencies		3,500	150		3,650	3,145
1850 - Home mission			1,583		1,583	3,346
1870 - Secular charities						(250)
<i>Missionary and Charitable Giving Totals</i>		6,500	1,733		8,233	7,241
<i>Parish Share</i>						
1910 - Ministry parish share etc	29,734				29,734	28,868
2011 - Ministry URC share	12,500				12,500	22,692
<i>Parish Share Totals</i>	42,234				42,234	51,560
<i>Clergy and Staffing costs</i>						
2101 - Working expenses of incumbent	274		32		306	1,866
2130 - Parsonage house expenses	773		424		1,197	500
2150 - Vicar's telephone	264				264	445
2370 - Visiting speakers / locums	142		75		217	71
<i>Clergy and Staffing costs Totals</i>	1,454		532		1,986	2,882
<i>Church Running Expenses</i>						
2201 - Parish training and mission						495
2222 - Church running - photocopier	981				981	816
2301 - Church running - insurance	1,071				1,071	996
2310 - Church office - telephone	573				573	574
2330 - Church maintenance	6,757				6,757	7,221
2331 - Cleaning	2,874				2,874	2,320
2340 - Upkeep of services	2,272		623		2,896	1,284
2341 - Junior Church						104
2345 - Support Costs re Activities	503	156			660	2,442
2360 - Administration	962				962	1,874
2365 - JLA - HEAT FUND LEASE	2,635				2,635	
2401 - Church running - electric	3,544				3,544	1,388
2410 - Church running - gas	9,030				9,030	3,523
2420 - Church running - water	372				372	337
<i>Church Running Expenses Totals</i>	31,580	156	623		32,361	23,381
<i>Governance Costs</i>						
2601 - Governance costs examination/audit fee	75				75	
<i>Governance Costs Totals</i>	75				75	
Payments Grand totals	75,343	6,656	2,889		84,890	85,065

There may be minor discrepancies in the totals if the pence are not being shown

The Benefice and Team Ministry of Tettenhall Wood and Perton

The Benefice consists of two parishes – Tettenhall Wood and Perton – and three churches: The Church At Perton, the Church of the Good Shepherd in Castlecroft, and Christ Church Tettenhall Wood. The formal establishment was originally of three full time posts, and now consists of a Team Rector based in Tettenhall Wood and a Team Vicar at Perton.

The Team Vicar has full responsibility for the Church At Perton, and there is no expectation of their having to give significant ministry time to the rest of the benefice. The post is an increasingly rare opportunity to have charge of a single church.

The Team Ministry is there to give support. In the past, the Team Rector and Team Vicar have met on a weekly basis for mutual support. On occasion, they have provided cover for one another. When it has been mutually beneficial, the parishes have worked together on specific projects or aspects of ministry (for example, with Confirmations, or to provide training for Junior Church leaders).

There have been moves recently to look towards greater collaboration both within the Benefice and beyond, and there will certainly be opportunities for interchange and engagement, but there is no requirement to do everything together or in the same way. The churches are of different character and have come on different journeys, and the Team Vicar has considerable freedom as to how ministry at Perton develops.

Current Ministry Team at Tettenhall Wood:

- Revd Phil Wootton, Team Rector – ordained priest 2001, in post since 2012
- Revd Lin Vawer, Assistant Minister (SSM, approx. 0.5 post) ordained priest 2021
- Revd Alison Bruton, Assistant Curate (SSM, approx. 0.5 post) ordained deacon 2023
- Joy Dipple, Reader
- Caroline Seaton, Reader

Parish of Tettenhall Wood

The Parish of Tettenhall Wood has a population slightly larger than that of Perton, around 11,500. It mainly falls within the City of Wolverhampton. Unlike Perton, it cannot be considered a single community, but has four or five small centres, and is broadly divided by a valley through which the A454 Bridgnorth Road runs. Some people picture Tettenhall Wood as an affluent area, but there is a wide variety of housing and circumstances, with 14% of households in social housing. The parish falls roughly in the middle of the rankings by Index of Multiple Deprivation (6,502 of 12,239).

According to the 2021 census, 27% of the parish's population is of minority ethnic background, mainly Asian. 49% of the parish population declared themselves Christian, the largest other religious identity being Sikh (9.7%). This diversity is most obvious in the church schools where there is a strong culture of being distinctively Christian and inclusive of all.

Christ Church, Tettenhall Wood, and the Church of the Good Shepherd, Castlecroft

The two churches of the Parish of Tettenhall Wood are purely Anglican, not LEPs (although they contain members of a variety of different church backgrounds). These two churches fall under a single Incumbent and PCC, and have worked hard in recent years to develop greater unity with one another.

Services in the churches:

Both Christ Church and Good Shepherd would be described as of Central Anglican tradition, with Word and Sacrament afforded equal value in worship. Services are mainly Eucharistic, making use of modern liturgies and the fullest flexibility offered by Common Worship.

Although the services at the two churches are very similar, Good Shepherd, being smaller and having a more modern building, seems less formal and has a warm family feel. With its large Victorian building, Christ Church feels more formal, and has an impressive church organ. On the first Sunday of the month at Christ Church, Sunday Praise is very different, with a band to lead the music and space for creativity through film, drama, quiet reflection or noisy activity in the service.

For principal services at both churches, digital projection is used rather than hymn books and paper service sheets. At Christ Church, the main services are live-streamed.

Criss-Cross, the local variety of Messy Church, has been running monthly on a Sunday afternoon since mid-2022, and has been steadily becoming established, bringing in families who do not attend on Sunday mornings.

Regular Services at Christ Church

1 st Sunday	8.00am Holy Communion 11.00am Sunday Praise (All Age)
2 nd to 5 th Sundays	8.00am Holy Communion 11.00am Parish Communion
2 nd Sunday	4.00pm <i>Criss-Cross</i> Messy Church
Thursday Friday	9.30am Holy Communion 5.00pm Evening Prayer

Regular Services at the Church of the Good Shepherd

All Sundays	9.30am Holy Communion
1 st Saturday of the month	11.30am Holy Communion (following Coffee, Chat & Craft)

Christ Church

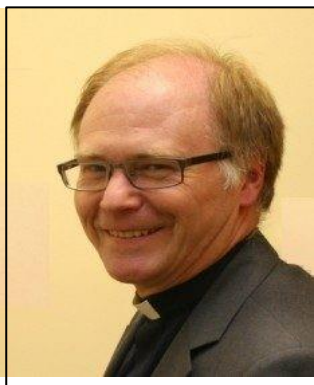
Tettenhall Wood



The Good Shepherd Castlecroft



Team Rector



Phil Wootton

Assistant Minister



Lin Vawer

Assistant Curate



Alison Bruton

Statistics – 2023 figures for both Christ Church and Good Shepherd

- Combined Electoral Roll: 187
- Combined ASA: 100
- Worshipping Community: 178
- Occasional Offices:
 - Baptisms: 10 (6 children & 4 adults)
 - Weddings: 2
 - Funerals: 28

Parish of Tettenhall Wood: activities

- Place of Welcome – weekly drop-in
- Forget-me-nots – Dementia carers, monthly
- Little Angels – pre-school stay and play, weekly
- Book Club – monthly
- Mothers' Union – monthly
- Christ Church Fellowship – monthly
- 'Lifted Hearts' – monthly singing
- Lent Courses
- Schools' Work
 - Open the Book – weekly, Christ Church Infants' School
 - School Worship – most weeks, Christ Church Junior School
 - School services in church
 - School governance – Christ Church Federation
 - Occasional assemblies at non-church schools
 - Occasional worship leadership for St Regis church secondary school
- Social and Fundraising events, such as Barbecue, Christmas Fair, Coffee Mornings, Quizzes and Concerts
- Principal Missions and Charities supported:
 - Church Mission Society
 - Christian Aid
 - Embrace the Middle East
 - Children's Society
 - Little Brothers of the Good Shepherd
 - Good Shepherd Relief-in-need

Perton Parish

Perton is an attractive modern garden village in South Staffordshire, built on the site of a WW1 and WW2 airfield. It is five miles west of Wolverhampton, three miles south of Codsall, ten miles from Bridgnorth and twelve miles from Telford. Perton is conveniently situated within a short drive of the M54 which links to the M6. Lichfield Cathedral is 45 minutes away by car. Wolverhampton has a busy modern railway station [connecting to London in an hour and three quarters] and a tram line to Birmingham.

Building began in 1976 and continued into the 1980s, now with 9000 people in 4500 homes. A new development of 220 houses is currently being built and there will be another 60 homes in the future.

The village has two lakes, an extensive network of paths, woodland, and the Staffordshire Way runs through our parish. The parish as a whole comprises Perton village and two outlying hamlets Kingswood and Trescott, with older housing, farms, farm cottages and barns, mostly converted, and some larger houses on Perton Ridge.



The Church and the Civic Centre are in the centre of the village, adjacent to the Upper Lake which is fed by the River Penk.

There are two pubs, a micro pub with real ales, a large Sainsbury's supermarket and fuel station, a popular Indian restaurant, a busy café and a fish and chip shop. We have a branch library and other businesses including a vet, hardware store, a newsagent with Post Office, a pharmacy, 2 medical centres, 2 dental practices, a building society, undertakers, estate agent, beauty salon, hairdresser and barber. There are two charity shops supporting local hospices. A bus service connects to Wolverhampton every 30 minutes.

We have three schools which are part of a three tier system. There are two First Schools with nurseries, a Middle School for ages 9-13 and then our young people are bussed to Codsall High School which has a Leisure Centre on site, which can be used by the community after school hours. Wolverhampton has two secondary Church Schools, Kings and St Peter's.

Our village has sports facilities with a pavilion, playing fields with 5 pitches, a fitness trail and an enclosed area for leisure ball games. The Scout Hut adjoins the pavilion. There is a children's playground in the centre of the village and 18 hole golf club on the edge of the village.



There are several major village events involving the Church and Civic Centre as community buildings, the pedestrian precinct and open space. Perton Carnival takes place on the first Bank Holiday Monday in May and the Christmas Fair in December.

A Spring Science Fair is centred at the Library. We have a short, free Firework Display at the Middle School in November. All these events are well supported.

The Civic Centre has rooms for hire with various activities taking place, including exercise classes, baby and toddler groups, drama and music events. Additionally there are two NHS clinics for diabetic retinopathy and pulmonary disease. The Parish Council office is situated in the Civic Centre, as is Perton Kingsway Food Bank.

We now have allotments using money requested from the developers of the new build. There are active groups of volunteers which liaise with South Staffordshire District Council in planting some open space areas and collecting litter. Our village is a safe place to live and has a low crime rate and we wish to preserve our identity

Most Perton residents work in the Wolverhampton and Telford areas. There are several small businesses situated in Perton Farm Barns, on the Bradshaws estate and others working from home. For a wider range of shopping, many residents travel to Telford, Shrewsbury or Bridgnorth.

We are proud of our village. Residents (and their dogs) enjoy the many walks, good shopping opportunities and links to the Staffordshire and Shropshire countryside.

LOCAL ATTRACTIONS

Local attractions include 3 National Trust properties - Wightwick Manor, Moseley Old Hall, Kinver Edge and Rock Houses, and Boscobel House [English Heritage].



Wightwick Manor

Smestow Valley Nature Reserve and Baggeridge Country Park are within a few miles. The Staffordshire and Worcestershire Canals are close by, connected to the Shropshire Union Canal via Autherley Junction.



Baggeridge Country Park



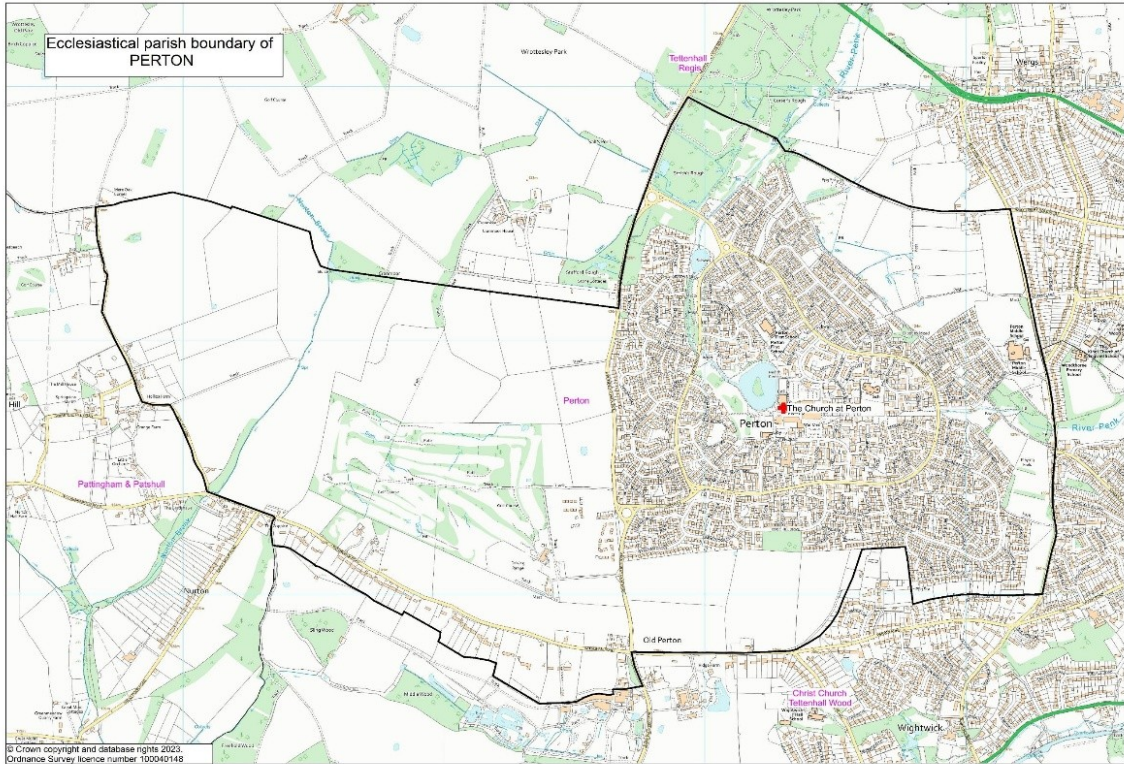
Bridgnorth is an attractive market town within easy reach. It is a popular area and home to Severn Valley Heritage Railway.



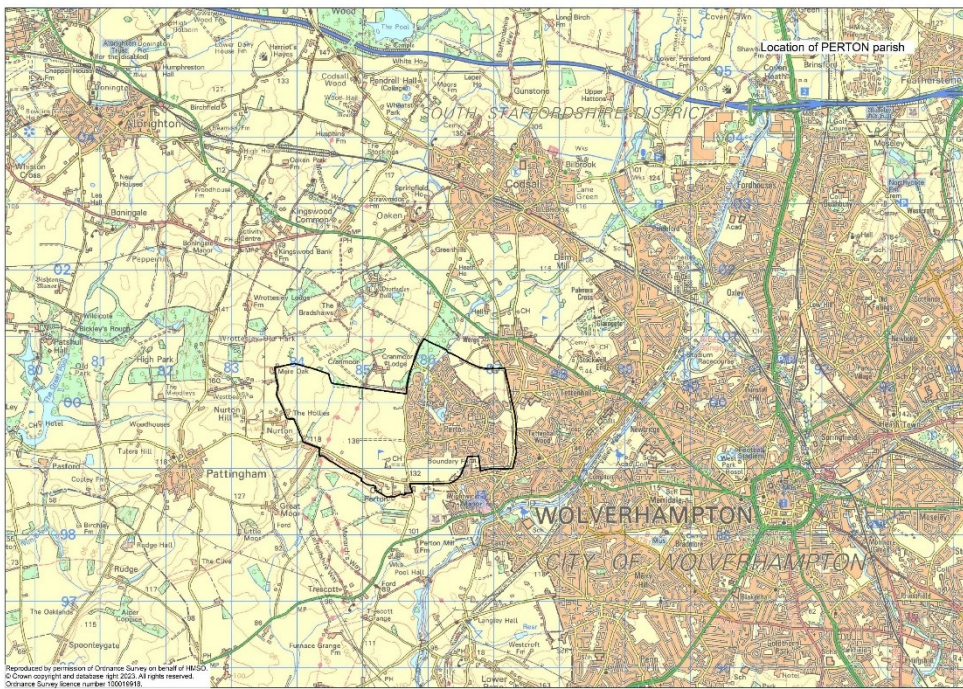
The city of Wolverhampton has The Grand Theatre, an Art Gallery, Molineux Football Stadium, and two entertainment venues called The Halls, which host gigs, concerts and other events.

Parish of Perton Source: Church England Data Services Team	
Population density (people per square mile)	4,610
% aged 0-4	5
% aged 5-19	14.7
% aged 20-29	10.2
% aged 30-44	18.3
% aged 45-69	36.6
% aged 70 and over	15.2
% Asian ethnicity	4.2
% Black ethnicity	1.4
% Mixed ethnicity	2.5
% White ethnicity	91.3
% Other ethnicity	0.6
% Buddhist	0.2
% Christian	56.4
% Hindu	0.9
% Jewish	0
% Muslim	0.5
% Sikh	2.2
% Other religion	0.4
% No religion	34.3
% Religion not stated	5.1
Parish code	200632
Parish local name	Perton
Parish legal name	Perton
Benefice	Tettenhall Wood and Perton
Benefice ID	20/358 W
Deanery	TRYSULL
Deanery ID	20401
Archdeaconry	WALSALL
Archdeaconry ID	204
Diocese	Lichfield
Diocese ID	20

Perton Ecclesiastical Parish map



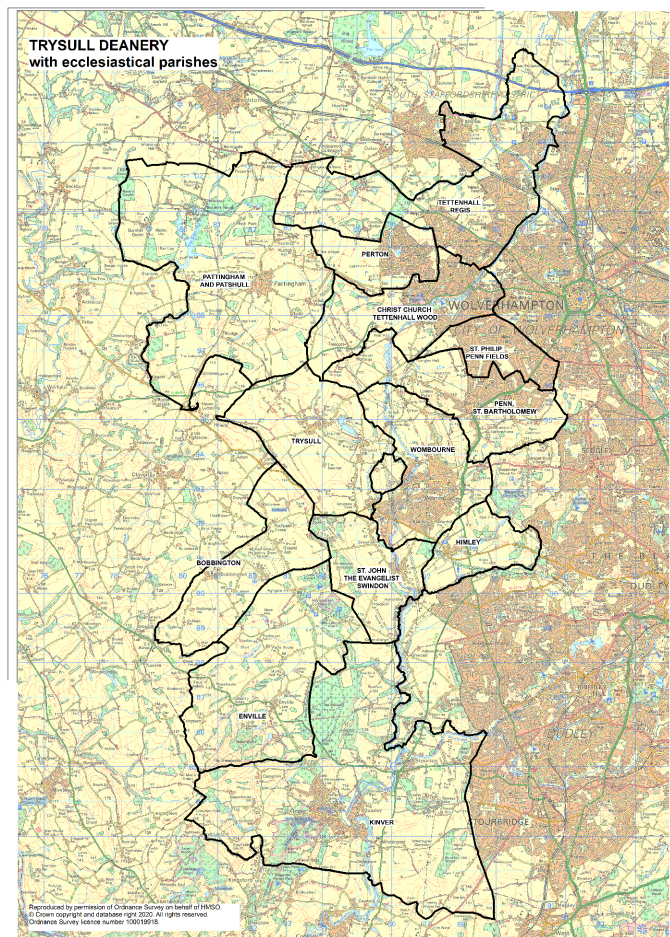
Wider area map



Our Deanery

Trysull Deanery is a wonderfully diverse area right on the southern tip of the Diocese. We straddle the border between the City of Wolverhampton and South Staffordshire and our parishes range from inner city, to suburban and rural. The Deanery comprises 13 parishes and 21 churches served by 11.5 clergy (FTE). In addition to the stipendiary incumbents there are a number of SSM's, Curates in training, Licensed Readers, and retired clergy with PTO.

Three of the Deanery parishes have established Team Ministries and only one parish is a single church benefice. Our Deanery is busy and active, with great support from lay members of our church communities. The area is primarily residential with some light industry and also some farming in the more rural parishes. The clergy chapter meets regularly, and given the fairly large geographical area, combines a mixture of online and in-person gatherings. Our meetings combine prayer, inviting speakers, supportive conversations and social events. The hope is that we are a supportive, welcoming and friendly group. All our Parishes welcome the ministry of both men and women.



Our Deanery Vision

The vision, mission and ministry of the Diocese is focused around the three priority areas of discipleship, vocation and evangelism (DVE) - as we follow Christ in the footsteps of the first Bishop of Lichfield, St Chad.

Over the past couple of years, across the Diocese, deaneries have been involved in the Shaping for Mission process which aims to strengthen our life of developing discipleship, encouraging vocation and inspiring evangelism in the context of our vision, while facing a significant reduction in financial income.

Within Trysull Deanery, Shaping for Mission has so resulted in an active focus on how we might practically and spiritually collaborate better, supported by a Mission Enabling Team with representation from each team/benefice/parish. The team's vision is: to continue to deepen our collaborative support for each parish/benefice/team as they each seek to join in God's mission in their specific locations in many and varied ways.

Amongst the team's roles is encouraging and supporting mission ideas and plans in parishes. So far, collaboration has deepened through the creation of a Chapter for Lay Ministers; ensuring Deanery Synod meetings are relevant and offer space for members of our churches to share their experience, expertise and challenges; the creation of a network for those involved in children and youth ministries; and the production of a Deanery Prayer diary.

The Deanery clergy and congregations are committed to the continued development of our relationships and collaboration as we now engage with the emerging Strategic Framework for Discipleship, Evangelism and Vocation, recently presented by the Senior Staff, which builds on Shaping for Mission.

Rev'd Julia Cody
Rural Dean, Team Rector Smestow Vale revjulia.rector@gmail.com