

A Parish Profile



The Parish of St. Chad's Church,
Pattingham with Patshull

Bishop's Statement

It is a joy to be able to commend this post for your consideration, because I am sure that for the appropriately called and gifted person it will be a really exciting ministry opportunity.

While St Chad's is a church that in some ways punches above its weight (in terms of the size of the congregation and its missional impact within the community) given the size of the village in which it is set, it is a well-resourced church, both financially and in terms of active, gifted laity. The Church is a beautiful place to worship in, and in good order, so all in all the role of incumbent has proved manageable on a 0.5 basis, yet also with space to put time and energy into new initiatives. The previous incumbent of Pattingham had a split parochial/Diocesan role and her 0.5 parochial ministry flourished.

Pattingham is set within the Deanery of Trysull which is a supportive and encouraging context in which to minister. St Chad's enjoys good relationships with its fellow churches locally and is committed to exploring further potential for working in partnership.

Please read on and I hope this will inspire you to take your interest further.

+Michael

February 2024

Parish Profile

The Church of Saint Chad is the Parish Church in Pattingham and is the only worship centre in a Parish of two and a half thousand people. It has a willing, enthusiastic congregation which has coped well with the upheaval caused first by the Covid pandemic and then by the interregnum.

There is also in the Parish the redundant Church of Saint Mary in Patshull in which, Covid apart, we held two services a year. It now belongs to the Churches Conservation Trust. Pattingham and Patshull became a United Parish in 1992.

The post in Pattingham is that of a half-time Vicar. At present there is no formal link to any other Church in the Trysull Deanery. The appointee therefore requires to be able to work independently and use the varied talents of the laity to enable worship, growth, outreach, and care for the whole village community.

During the interregnum, however, the PCC has agreed to establish informal links with both Perton and Tettenhall Wood Parishes and from this a Collaboration Group has been established which will meet several times a year to explore areas of ministry where we can cooperate to benefit both clergy, laity, and the congregations.

We have adopted as a Mission Statement the following.

“Following Christ in the footsteps of St Chad, by living out our faith; taking the church to the community and growing the church”.

Vision:

To fulfil this ambition our vision is:

- to be an inclusive Church that reaches out to the whole community of Pattingham and Patshull and beyond. A Church that is welcoming to all who wish to share the 'good news' that the gospels bring, both as regular members as well as those who only attend occasionally or not at all.
- to encourage children, young people, and young families to become involved in Church life and its activities so that they can experience the joy and spiritual fulfilment of Christianity.
- to emphasise the benefits of coming to Church for those searching for friendship, spiritual guidance, and comfort.
- to ensure that the Church, through its members, is at the heart of the community.
- to maintain an interest in the wider work of the Church in the Deanery and Diocese and beyond, while still being concerned with our own parish.

Challenges:

St. Chad's Pattingham is in many ways a successful church and has survived the problems of Covid lockdown and a long interregnum in a healthy state.

However, like all churches it faces significant problems which are challenges a new Vicar will face on appointment. The following are in the opinion of the PCC the most pressing:

- In an increasingly elderly congregation to attract active members in the middle age range.
- To address the lack of children and young parents in the congregation. The potential is there as school services show. Links with St. Chad's School require to be strengthened.
- To build up pastoral care for the elderly and housebound.
- To maintain and develop the variety of worship which has been established in the interregnum and which will appeal to those without a strong church background.
- To make the church building much more useful and versatile for the congregation and the community. Mainly by achieving the re-ordering of the North Aisle to make a flexible space.

Person profile:

We are seeking to appoint a priest who:

- is enthusiastic about developing the work and witness of the worshipping community in Pattingham and will work with the PCC in further developing established strategies, as well as developing new ones, for the further growth of the Church.
- can inspire and guide people to carry out God's work in a loving and understanding way and has the vision and foresight to see what is needed.
- wishes to be part of our community and be involved in the life of the parish. Understands a mixed rural and commuter community and is sensitive to its concerns and challenges.
- is willing and able to develop and maintain a broad range of forms of worship, which will appeal to Anglicans and non-Anglicans alike.
- is prepared to undertake pastoral work in the village for both Church members and non-members.
- can maintain the close links with the village school and to expand the ministry to the young people and their families in the village.

Role Description:

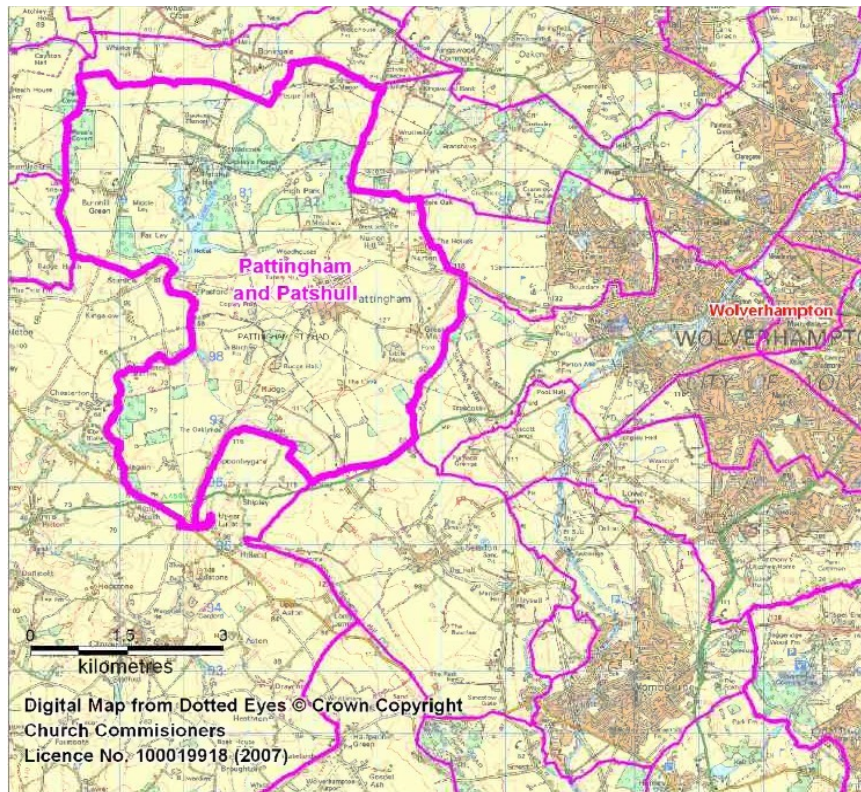
We expect the Vicar to:

- act as the leader of Church activities in the parish, while being prepared to delegate duties as necessary.
- conduct the regular worship of the Church on Sundays, Wednesdays and special events as well as performing the Occasional Offices.
- identify the needs of parishioners and undertake regular visits to those in special need.
- maintain and develop relationships with the whole community of Pattingham and Patshull and be a visible presence in it.
- become involved and support some of the established initiatives which see the Church at the centre of village life.
- attract new people, especially those in the younger age groups, into the Christian faith and active Church membership.

The Parish of Pattingham with Patshull

The Parish of Pattingham with Patshull is an attractive rural area situated in the South Staffordshire countryside approximately 6 miles from Wolverhampton and 10 miles from Bridgnorth.

The Ecclesiastical Parish is slightly larger than the Civil Parish. The Civil Parish includes the villages of Pattingham, Patshull and Burnhill Green in Staffordshire and the Ecclesiastical Parish also contains parts of Shropshire, including Rudge and an area around Patshull.



Small dormitory housing estates have filled out the village but have not greatly altered the centre of the village. The outlook is still of fields and woodland with views towards the Clee Hills and the Wrekin. Farming still dominates the landscape and the surrounding countryside. The natural beauty of the area is appreciated by the local community which is keen to preserve the rural outlook.

The total population of the Civil Parish was 2,262 according to the 2021 census. The Ecclesiastical Parish numbered 2495 in 2021. There are 1038 occupied households, and the Parish covers an area of 11.2 square miles. The population, of whom 19% were under 18 and 28% were over 65, is 94% white ethnicity. About 80% live in Pattingham village and the population is older than the Staffordshire average with a mean age of 44.5 years.

St. Chad's Church

The Parish Church of St. Chad lies in the centre of the village of Pattingham and ministers to and welcomes people of all denominations, being the only place of worship for several miles.

The sandstone Church has Norman origins and is in a good state of repair, a Trust Fund being available to fund repairs and maintenance. Sensitive additions have been made over the centuries, the most recent in 2000 bringing together a meeting room known as "The Loft", vestry and modern toilet facilities. The stained glass is 19th or 20th century; one window is by Kempe, a particularly fine example of 19th century-stained glass. More recently we have carried out a complete re-ordering of the Lady Chapel. We have major projects currently with the DAC, to modify the West Door entrance (faculty application submitted) and undertake a major reconfiguration of the North Aisle.

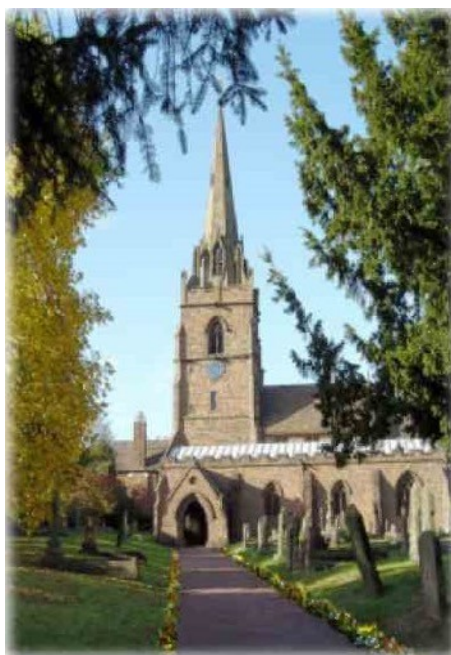
There is a well-maintained ring of eight bells with an active band of ringers. There is a regular Church choir of approximately fifteen choristers.

In the past 10 years a complete audio-visual system has been installed with three screens, two television cameras and a control desk for sound and vision. Internet access using a mobile signal booster has been installed in the church and this has enabled live streaming of both recorded and live services. Indeed, the Church developed an enviable reputation for its live streaming of services during the Covid pandemic, with people joining from far and wide.

A Church Magazine is produced monthly which has a current circulation of 355 copies. It includes information and articles about the Church and the wider community.

The Church has had a website www.pattinghamchurch.org.uk since November 2006 and over its many pages gives detailed information about the Church and its history, a diary of events, a Youth section and photo galleries of events, special services and weddings.

During lockdown a weekly email bulletin was developed called ChadNet. This is freely available on request and gives information about all Church activities as well as contributions from Church members. This has proved highly successful as a means of communication throughout the parish and is being continued. There is also a Facebook page.



The Church is surrounded by a well-kept churchyard, which is professionally maintained. Additional land was purchased to extend the churchyard in the 1990s and this is now in use.



The Church offers facilities for the disabled including a loop system for the hard of hearing, large print service books, a wheelchair, a toilet for the disabled and chair lift access to the Loft.

St. Mary's Church

The first Church at Patshull was built in the reign of King John but replaced in the 1740s by one built by James Gibbs.



St. Mary's was made redundant when the parishes were united and is now in the care of the Churches Conservation Trust. Prior to lockdown it was used, with permission, for several services a year. A service is still held each year on Rogation Sunday. The churchyard remains open and is the responsibility of the Patingham with Patshull Parochial Church Council. There is a healthy fund specifically for the maintenance of this churchyard.

Forms of Worship

Central inclusive churchmanship is necessitated by the facts that St Chad's is the only Church in the village, it is a single Church Benefice and a considerable proportion of the congregation come from a non-Anglican background.

As the only place of worship in the Parish, St Chad's welcomes and includes people of many denominations in Parish life.

Pattern during the Interregnum.

The current pattern of worship was introduced in June 2021 when the Vicar retired. This was to make the best use of resources both within the congregation and those of visiting clergy. It has however varied slightly over time.

There has been no 8.00am Communion service on Sundays during the interregnum.

Sundays

10.00 am	1 st Sunday	Family Service led by laity followed by a short said Common Worship Communion.
	3 rd Sunday	Youth Service led by young people followed by a short said Common Worship Communion.
	2 nd , 4 th , 5 th Sundays	Holy Communion CW. Sung responses with choir and organ.
6.30 pm	2 nd and 4 th Sundays	A lay led service either of BCP Evening Prayer or an Iona style service.

Wednesdays

10.00 am	Every week	BCP Holy Communion (depending on availability of visiting clergy.)
----------	------------	--

The Sunday School which was held during the service on the 2nd Sunday is at present suspended. For a trial period from September we are holding a Kidz Club in the afternoon of the 2nd Sunday with a view to attracting more participants.

Baptisms - by agreement between the Vicar and the family are mostly held on Sunday afternoons, although they may also be held at the 10.00am service.

Special Services:

These are held at Easter, Harvest, All Souls, Remembrance, Christingle, and Christmas.

A Rogation Walk is held each year ending in a service at St Mary's Church in Patshull. There was previously also a service there on St Mary's Day.

A Holiday Club is held each year in August traditionally using the Church building but in 2022 and again in 2023 it was held at the nearby Kingswood Outdoor Centre. This was highly successful and encouraged the children in their knowledge of environmental issues. This usually attracts about 30 primary school age children.

Links with St. Chad's School

Three School Services are held, one at the end of each term, led by the school pupils and teachers. A service is held in Church for the School on St Chad's Day

A Harvest service for the school is held each year with donated gifts brought by the schoolchildren. A team of Church members goes into the school one morning each month to lead Open the Book sessions for the whole school. During the pandemic this was done on-line.

The involvement of the Vicar with the school, of which they are a Governor, is regarded as a very important aspect of the duties of the post.



Eco Church

For the past few years, the Church has been actively pursuing the principles of Eco Church. This has led to obtaining the Silver Award and progress in underway towards the Gold Award. We are cooperating with the local school in projects which highlight the importance of environmental issues. This is seen in the Forest School project and the successful Woodland Holiday Club. We are working on improving our carbon footprint as we acknowledge that part of the church's mission is to safeguard the integrity of creation and sustain and renew the life of the earth.

The Well

We are supporting the Well project in Wolverhampton which is a local food bank. All the harvest produce went to it last year and we continue to collect food each week which is taken to the Well by one of our members.

www.thewellwolverhampton.co.uk

Prayers for Peace in Ukraine

Since the start of the war in Ukraine we have been holding prayer sessions for peace in Ukraine. Initially several times a week but now one evening a week in Church for 15 minutes. This is attended by 7 to 10 people and is led by members of the group. We have also provided financial support to Ukrainian refugees living in this country

Future developments

This pattern of services will obviously be reviewed following the appointment of a new Vicar. The changes that have been introduced demonstrate that the PCC and the congregation are open to considering all forms of worship and the previous patterns should not be regarded as “set in stone”. There is a strong desire that worship should be relevant, engaging and appealing to all sections of the congregation and the wider community. The PCC fully accepts that this may involve a variety of changes and is open to the consideration of ideas which will enhance the worship of the different sections of the Church congregations and prove attractive to those who do not come regularly to our services.

Pastoral Care

There is a considerable need in the parish for Pastoral Care. This is largely because of the age profile of residents within the village. Those in need of care are managed in their own homes. There is no care home or specific accommodation for the elderly in the village.

A small Pastoral group, which included the Vicar, endeavours to visit as many as possible. The Parish has recently offered Home Communion on request and there is obvious potential for the further development of this ministry and in the whole area of pastoral care.

Current PCC Policies

1. Women in Priesthood
The PCC is happy to consider both male and female applicants.
2. Previously married Priest whose former spouse is still alive
The PCC would consider a formerly married Priest whose former spouse is still alive, depending on circumstances.
3. Second Marriages in Church
The PCC has approved conducting second marriages in Church, subject to the discretion of the Priest in individual cases.
4. Baptisms
The PCC policy on baptism is that all children within the Parish are welcomed for baptism, and that any child from outside the Parish can be

baptised provided a letter of permission from their own Parish Priest is obtained and they, or their parents, are regular attenders at our Church.

5. Communion before Confirmation

The PCC supports this policy, and it has been implemented.

Staffing

The post of Vicar is half time. How the time is allocated is the sole responsibility of the incumbent but is undertaken in discussion with the Wardens and the PCC.

Lay leadership.

For the past 11 years there has been a Licensed Lay Reader in post. He now has a PtO.

A new Reader was licensed in September 2022 and a further candidate has undertaken the Pathways to Ministry course.

There are 7 other members of the congregation who also lead services as part of the monthly rota of 1st Sunday services.

The following positions are paid:

Organist/Choirmaster
Verger
Magazine Editor
Cleaner

Members of the congregation assist in the following areas as volunteers:

Licensed Chalice Assistants
Altar Servers
Crucifers
Sidespersons
Intercession Leaders
Lesson Readers
Choristers
Coffee providers after services
Bellringers
Flower Guild members
Brass Cleaners
Church clock winder
Money Counters
Electoral Roll Officer
Parish Administrator - at present this role is limited in its scope but there is a need for this to be developed.

Electoral Roll (as of April 2023):

Resident:	129
Non-Resident:	34
Total:	163

Attendance Statistics for the year 2023

Average total Sunday attendance at all services (includes double visits)

Adults:	76
Under 18s:	8
Total:	84

Average attendance 2023 (includes double visits)

Sundays

10.00am	Holy Communion, Family or Youth Service	60
6.30pm	Evensong / Iona (normally twice a month)	34

Wednesdays

10.00am	Holy Communion	9
---------	----------------	---

Usual Sunday Attendance from the Statistics for Mission returns for 2017-19 and 2022-23(double attenders counted only once)

	2017	2018	2019	2022	2023
Adults:	89	76	77	55	59
Under 16s:	12	7	7	5	5
Total:	101	83	84	60	64

Numbers have partly recovered to the pre-pandemic levels.

To illustrate the potential of the Church during the week 18th to 25th of September 2022 some 819 people attended various services.

Annual Number of Baptisms, Weddings, and Funerals

	2019	2021	2022	2023
Baptisms:	20	12	15	9
Weddings:	9	3	3	3
Funerals:	30	12	22	9

Financial Position

Thanks very largely to the generosity of previous generations, present voluntary giving and fund-raising events, St Chad's church is in an extremely healthy financial position.

For the year to December 2023, we estimate that we will be below breakeven on an annual turnover of circa. £141,000, whereas for the previous year ending December 2022, we achieved breakeven. However, the overall financial position of St Chad's remains very healthy with significant cash reserves and the support of two very substantial trust funds.

Whilst we are presently in the process of planning a stewardship campaign for the start of 2024 to address the revenue shortfall, the two trust funds enable us to meet the maintenance costs of the Church, fund the maintenance of the Churchyard as well as provide for improvements to the fabric of the Church. Additionally, with the aid of two fund-raising events in 2022 (the village Fete and Christmas Tree Festival) St Chad's donated over £5,100 to local good causes and mission giving.

The seven Scarecrow Festivals held since 2011 have raised just short of £80,000, benefiting the Church and supporting local charities. St Chad's has also, for 30 years, organised a well-respected and attended cross country run with competitors from across the UK. The "Bells Run" generated significant income for the Church and various local charities, the last being in 2019 and we are in talks to replace it with a similar event in 2024. In summary, our financial position allows the PCC to focus on engaging in Christian life within our community, rather than being preoccupied with monetary issues.

Full financial details for 2022 are available on the church website.

Summary of Accounts for 2022:

Total income: £117,953 without investments income.

Total expenditure: £117,673 without investment charges.

Parish Share 2021 £41,418

Common Fund 2022 £33,188

The Parish Share has been paid in full every year, with a rebate accepted from the Diocese for 2021.

The Parochial Church Council

There are 12 elected members on the PCC with the option to co-opt more if required. There are also 3 Deanery Synod representatives, 2 Church Wardens, and the Vicar as Chair. It used to meet 8 times a year but during the interregnum has been meeting every 4 weeks. There is a Standing Committee, as well as committees dealing with Fabric, Finance, and Pastoral Care. These groups have non-PCC members on them. Matters relating to Worship were dealt with in a Ministry Team composed of the Vicar, Wardens, Reader, and Verger.

In preparation for the interregnum the PCC decided to create three Informal Working Groups to manage the affairs of the Church. These are each comprised of several members of the PCC with some members from the congregation to assist. They cover Administration, Outreach and Growth and Spiritual leadership. They report to the PCC at each meeting with ideas and proposals for action. There are two Churchwardens in post and the PCC has accepted the principle that there should be a maximum length of service by Wardens of 6 years. There are three Deputy Wardens who are not necessarily ex-officio members of the PCC. One of these is responsible for matters related to Churchyard memorial applications.

Trysull Deanery

The Rural Dean of Trysull, Revd. Julia Cody, has contributed the following statement about the exercise called Shaping for Mission which St. Chad's is involved in.

The vision, mission and ministry of the Diocese is focused around the three priority areas of discipleship, vocation, and evangelism (DVE) - as we follow Christ in the footsteps of the first Bishop of Lichfield, St Chad.

Shaping for Mission is the process taking place across Lichfield Diocese to strengthen our life of developing discipleship, encouraging vocation, and inspiring evangelism in the context of our vision, while facing a significant reduction in financial income. This is happening within each deanery as we seek to work together as people of hope.

Within Trysull Deanery, Shaping for Mission has so far resulted in an active focus on how we might practically and spiritually collaborate better, supported by a Mission Enabling Team with representation from each team/benefice/parish. The team's vision is to continue to deepen our collaborative support for each parish/benefice/team as they each seek to join in God's mission in their specific locations in many and varied ways.

Amongst the team's roles is encouraging and supporting mission ideas and plans in parishes. Beyond that, collaboration so far has deepened through the creation of a Chapter for Lay Ministers; following a fantastic Deanery Synod meeting sharing our experience, expertise, and challenges in relation to ministry to children and young people, the creation of a network for those involved in these ministries; and the production of a Deanery Prayer diary. Trysull Deanery clergy and congregations are committed to the continued development of our relationships and collaboration.

Pattingham Village

Pattingham village supports several local shops including a family butcher, a pharmacy, a hair salon, a men's outfitters, a home interior shop, and a general store, which incorporates the Post Office, as well as a café, two public houses and the Pattingham Club.



There is a Church School, which caters for children aged 3 to 9, with about 140 pupils. Links between Church and school are a high priority.

Other facilities include the Village Hall and Playing Fields, which include football pitches, tennis courts and a children's play area. There is an hourly local bus service to Perton and Wolverhampton on weekdays.



There is a wide range of housing, consisting of privately owned modern and older houses, social housing, a small number of larger residences and many outlying farms, cottages, and barn conversions. A few people work locally in the shops, small businesses, or in agriculture or horticulture.

A large number commute to Wolverhampton, Birmingham, Telford and further afield.

Patshull and Burnhill Green

The former parish of Patshull consisted of the Patshull Estate and the small village of Burnhill Green.

The Wider Church

Pattingham with Patshull is in the Deanery of Trysull and within the Bishop of Wolverhampton's Pastoral Area and the Archdeaconry of Walsall in the Diocese of Lichfield.

The Church and the Community

St. Chad's Church plays a central role in the life of the parish through the services it provides for parishioners, through strong links with other village organisations, and through the involvement of the wider parish community in Church events.

St. Chad's is clearly the centre of the parish for major family events, baptisms, weddings, and funerals, and is well used for these events by parishioners. A recent survey by the Parish Council showed that almost 90% of respondents considered the Church important for these purposes. The Church has been considering for some time how it can contribute further to the life of the community, especially the children and young people. This work is still being actively pursued by a group of Church Members.



Lunch Club

For three years prior to lockdown members of the Church, assisted by other volunteers, provided a monthly lunch for about 35 elderly residents in the Village Hall. This was suspended due to safety concerns but has now been recommenced.

Links with Village Organisations

Strong links are maintained with a number of village organisations, including the following:

St. Chad's C of E (VC) Primary School

The constitution of the Governing body stipulates three foundation governors nominated by the Church. One of these is the Vicar. A service is held in Church for the whole school at the end of each term, at Harvest and on St. Chad's Day. We have also run Experience Christmas in 2022 and plan to hold Experience Easter. This brings the whole school in to Church in their individual classes. A group of lay people visits the school once a month to perform Open the Book services for all the children. The link with the school is regarded as very important in connecting with both the children and their parents.

Drama Group

The Drama Group, which has a considerable number of church members in it. In the past several performances were done in the Church building.

Village Hall and Playing Fields

Members of the congregation serve on the Village Hall management Committee and the Playing Fields Committee.

Church Events

There are a number of events which are run by or controlled by the PCC which involve many from the wider community in addition to Church members.

The Church Fete is a major annual event for the whole village held on the village field.

A Century Club is run to raise funds for the Church, approximately half the members are not regular churchgoers.

Holiday Club

A Children's Holiday Club - a three-day annual event is held in August, open to all children in the village aged 5 - 13 and run by Church members and outside professionals.

Flower Guild

Some of the members of the local Flower Club form a Flower Guild in Church. They maintain the flower arranging in the church.

Vicarage

The Vicarage is at 20 Dartmouth Avenue, Pattingham, Wolverhampton, WV6 7DP.

It is a modern, well-appointed gas centrally heated vicarage with gas fire in study and sitting room. It comprises hall and cloakroom, sitting room, dining area, study, kitchen and utility room. Four bedrooms, bathroom, double garage. Small garden. The study has a separate external entrance. Some refurbishment is required. Although this is mainly the responsibility of the Diocese the PCC will consider some assistance if it is required.

It is three minutes' walk from the Church and shops and a five-minute walk from the school.



Parish profile — St. Chad's Church, Pattingham with Patshull — February 2024