



BUCKNALL TEAM MINISTRY PARISH PROFILE



Contents:

Welcome to the Bucknall Team	3
The Parish	5
Meet the Staff Team	7
St Mary's Bucknall	8
The Marychurch Centre	10
St. John's Abbey Hulton	11
St. Stephen's Bentilee	13
Kingsland Cof E Academy	15
The Rectory	17
Wider and within the City	19
What we have to offer	20
Is God calling you?	20



Welcome to Bucknall Team : One Parish - Three Churches - One Mission

**We are one parish with three centres of worship,
St John's Abbey Hulton, St Mary's Bucknall and St Stephen's, Bentilee.**

Bucknall Parish developed in response to city re-housing from the late Victorian times.

St Mary's Church, Bucknall is at the centre of our parish and planted the two estate churches as the two large council estates of Abbey Hulton and Bentilee were developed in the 1950's & 60's and the Bucknall Team was formally set up in 1981/2.

As a Team we work well together, supporting each other in prayer, financially, and sharing resources and good practice as required. Whilst each district takes responsibility for its own day to day life and mission, there is a real sense of togetherness, acknowledging that "together we are stronger."

Being of open-evangelical tradition and open to the gifts of the Spirit, we minister to our varied local communities, seeking to be truly Anglican – Church for all people.

We have a passion for the Gospel and a desire to see lives transformed through relationship building and encounter with the living God. We seek to do this through growing and discipling people of all ages in their faith, releasing them to fulfil God's vision for them and our communities. We place a strong emphasis on lay ministry with a number of Licensed Ministers across the parish and have two members currently undertaking training.

We are well known across our estates, and have good relationships with our schools, care homes, local businesses and councillors.

In each of our churches we offer a very warm welcome and we are reaching out to people where they are; offering food, companionship, warmth, a listening ear and caring hands. We seek to follow Christ's example of meeting both the physical and spiritual needs of people, sharing the love of God in very practical ways alongside preaching and teaching.



We are really excited by the recent development in our young people's work, with members from all three churches together attending city wide youth events and the 'Limitless' youth event in summer 2024. Following this we ran a Youth Alpha and the new 'Bucknall Team Youth Group' has emerged. A number of our older youth are undertaking training to become young leaders themselves. We look forward to seeing how this grows and develops.

Kingsland C.E. Academy is our pioneering Church of England School and incorporates the 'Lighthouse Community Centre' and Lantern Café, with which we have a very special relationship. They have been invited to be part of a mission project with the Lichfield Diocese, to develop a new worshipping community at the school alongside our PCC.



The work across all three churches and school gives a platform for growth in the coming years.

We are a busy parish but in the size of parish that we are, there is always a huge potential to do more and reach more people – the challenge is resources both financial and people.

As a Parish we are praying for the person whom God is calling to come and share with us in our ministry in Bucknall Team.

We are looking for a new Team Rector to lead our Team who:

- has a real passion and heart for mission and ministry
- will join with us in reaching new generations and transforming our communities
- will share our vision to see our churches continue to flourish and grow

‘Working Together for God’s Kingdom’



What we have to offer:

- Supportive team of Clergy, Reader, Licensed Lay Team and people in training
- A church which is open to change and willing to collaborate
- A friendly and welcoming community
- Good ecumenical links and supportive Deanery Chapter
- Part time Admin Support
- Respect for non-working days and holiday entitlement
- Full reimbursement of expenses

Is God calling you to join us?

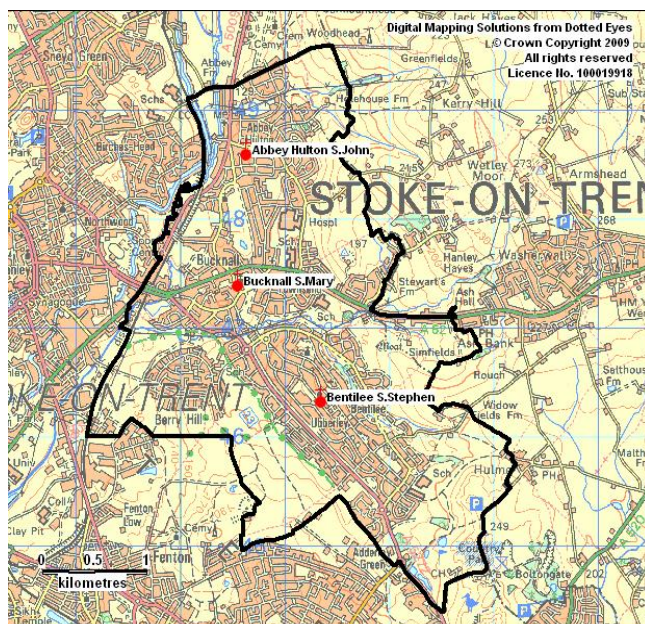
- Are you a leader who can work with and release others to fulfil God's vision for them and for our Parish?
- Are you of open-evangelical tradition and open to the gifts of the Spirit?
- Have you a passion for the Gospel and a desire to see lives transformed?
- Have you got strong leadership skills?
- Are you called to roll up your sleeves in a large U.P.A. in Stoke on Trent?
- Have you the experience of loving and ministering amongst all kinds of people?
- Have you a sense of humour?

The Parish

Approximately one mile east of the city centre of Stoke on Trent, the Bucknall Team serves a parish of 27,049 people in the urban districts of Abbey Hulton, Bentilee and Bucknall. It appears in the top 3% on the deprivation scale with a rank of 268/12239.

Most of our parishioners live within or close by the parish boundaries.

We have one PCC numbering 25 trustees; and each district is overseen by a Local Leadership Team, whose size is appropriate to the local context.



We meet together for Parish Services and hold Parish events such as a Parish BBQ and picnic to build and strengthen relationships.

During the vacancy Revd Julie (our self-supporting Associate Minister) is based at St Mary's covering weekly services and day to day life of St Mary's Church & Marychurch Centre.

Our two estate churches of St John's & St Stephen's are working closely together under the leadership of Revd Malcolm (Team Vicar). This is working very well with a monthly joint service, sharing preachers for other services, and occasional joint Local Leadership Team Meetings to plan Services plus outreach and events.

The work in all three churches gives a platform for growth in the coming years.

The outworking of our policies towards infant baptism, re-marriage, children and young families etc. is slightly different as each district requires, following the basic principle of seeing these as an opportunity to reach out to people with God's love.



The City's Crematorium borders the Parish, the clergy officiate at funerals there as required alongside funerals in church. We co-ordinate a pattern of Bereavement (Memorial) Services throughout the year; the clergy work across district boundaries to minister to parishioners in their time of need.

There is a mandated Parish Leadership Team (PLT) which comprises the clergy team, Lay Ministers plus Wardens from each district. The PLT seeks to develop parish-wide mission and ministry initiatives, as well as provide mutual support for local ministers.

We are registered with the Charity Commission (rcn: 1129234)

Financial Statement

The Diocese recognises our financial constraints as well as our aspirations to meet our obligations. Our Common Fund request is divided equally between the district churches. We also divide the central parish costs based on a formula agreed annually by the PCC. This is kept under review and we stand 'shoulder to shoulder' across the parish. We do not have a giving problem but are in a very large Urban Priority Area with people who have very low incomes. A full set of accounts is available on request.

Average Sunday Attendances for 2022-2024 (All ages)

	St.Mary's	St.John's	St.Stephens
2022	49	60	33
2023	59	78	36
2024	67	80	33

Future Challenges and Opportunities

- Sustain and grow the existing worshipping communities
- Training and empowering of people to take an active role withing the life of the Churches giving opportunities to each person within the body to discover what part they have to play within the life of Christ's Church
- To reach new generations and grow new congregations through Fresh Expressions of Church and an evangelistic outlook
- To contribute towards the transforming of our community
- To develop networks with existing and future users of our parish buildings
- Development of a Parish visiting team

Leading the Bucknall Team

As 'One Parish with Multiple Worship Centres', each district takes responsibility for its own life and mission, whilst working together in unity for the furthering of God's kingdom.

The Team Rector

- leads the leaders
- Leads in developing identity and vision across the whole parish,
- works closely with the churchwardens
 - Ensure relationships with the schools stay strong and are further developed
 - Ensures good governance arrangements are in place
 - Ensures there are regular staff meetings and good communication across the parish.

Our previous Team Rector also focussed on discipleship, and schools ministry.

Leading St. Mary's Church

We particularly want the new Team Rector to lead St. Mary's Church into the next phase of its life, whilst ensuring that ministry responsibilities are fairly shared across the Team. This will require a passion for the gospel, gifting in visionary leadership and a desire to empower, equip and lead the church in its mission.

The Staff Team:



Team Rector

St Mary's Bucknall
Is God calling you?

Focus on Oversight & Team Leadership,
Discipleship & Schools ministry



Revd Malcolm Mycock

Team Vicar
St John's Abbey Hulton &
St Stephen's Bentilee
Focus on outreach and evangelism,
Estates ministry, Recovery & support

Revd Julie Marshall

Assistant Priest (SSM)
Based at St Mary's
Focus on supporting and
developing volunteers,
occasional offices and
general organization issues



Mrs Lynn Brough

Parish Administrator
(25 hrs per week)

St Mary's Church, Bucknall



We're a mostly lively bunch of 50-60 (adults) and a dozen young children, who've seen some growth in recent years from the high volume of young families who bring their children for Baptism. We have an 'open-door' approach to worship and with our music group aim to make our services as accessible as possible to all ages.

Ministry is assisted by our Ordained Local Minister, and Licensed lay team. We aspire to see all people released in spiritual gifts and provide opportunities for prayer ministry as part of our services.

Our potential challenges and opportunities for the immediate and long-term future include:

- ❖ Developing and building on the amazing work with our children and young people
- ❖ Sustaining and growing the existing worshipping community
- ❖ Developing networks with existing and future users of the Marychurch Centre

We currently offer the following 10.30am Sunday Services:



1st Sunday: Celebration Praise, worship and bible study, with children's groups

2nd Sunday: Holy Communion with children's groups

3rd Sunday: All age worship including infant baptisms with children's groups.

4th Sunday: Holy Communion with children's groups

Wednesdays: 10.30am:

A more traditional Holy Communion service with fifteen to twenty-five communicants.



A thriving and well-resourced **toddler group** meets every Thursday in term time in conjunction with Kingsland school. This is a point of contact between church members and local families. In 2024 we celebrated 50 years of this ministry among the community.



We have excellent links with all of our local schools and support their collective worship curriculum. Our church school, Kingsland Primary, has a distinctive Christian character and is outstanding at meeting the needs of all learners. Following the latest SIAMS inspection the school has been judged to be living up to its Christian vision and values as a church school. Kingsland regularly attend St Mary's Church for Harvest, Christmas, Easter and for leavers services. Church members along with the Rector have been involved in supporting the school as governors.



Mid-week Groups



Craft, Create and Connect meet in the Marychurch Centre on Tuesday's 1pm-3pm. We are a group of enthusiastic crafters who create items that are presented as a theme at our Christmas Tree Festival, Flower Festival, Harvest Festival, Christmas and Easter services along with post box toppers that advertise up and coming events, we are currently involved with 'Clay Body' our local theatre performance group to produce crafts and items to use in their performances.

We host the parish wide **Men's Breakfast** on the last Saturday of the month, during each meeting a guest speaker is invited along. This is an opportunity for Men to get talking which is good for their mood and mental health and to make friends and share fellowship.



Holly Lodge is an elderly care home in the community where we hold a short service on the first Saturday of every month. This is an act of witness for the elderly and their families, staff and carers.

The Church of St. Mary the Virgin is the third on the site and was built in the 1850's. It had an extensive re-ordering in 1984 and major roof repairs in 1995.



The building is in very good order;
we have an inviting coffee area with
modern appliances.
Our Church yard has been closed since 2008.

The Marychurch Centre

The Marychurch Centre, 153 Werrington Rd, hosts St Mary's Church Hall and our Parish Office. The Centre was completed in 1955 and extensively refurbished in 2004. It offers a large hall with kitchen, toilets and store room at road level. The lower level, accessed from the adjacent driveway and car park, consists of three smaller function rooms, the Parish Office, a kitchenette and toilets. These facilities are regularly hired by the community for functions and local business meetings and many church activities.



St John's Church, Abbey Hulton

St John's Church & Welcome Centre is in the heart of the Abbey Hulton estate (population c.6500)

We are passionate about our community and sharing the faith, hope and love of Jesus.

The worshipping congregation is a wonderful mix of ages. Having steadily grown in recent years we number about 55 adults and 23 children & young people. Seeking to be open to the Holy Spirit, our worship is 'relaxed yet reverent', alternating between Holy Communion and Morning Prayer at our 10.30am Sunday Service with our children's work 'Kingdom Kids' running alongside. Currently we have a joint service on the last Sunday of the month with members from St Stephen's, Bentilee, alternating venues.





We connect with the community in many ways from Occasional Offices, on the street outreach, knocking on doors or offering prayer to people outside the local shops, handing out light sticks, sweets and Gospels outside church at Halloween, leading Remembrance day parade and service at the local Crematorium and Cenotaph, to taking Santa round the streets at Christmas, and cooking Christmas lunch for those on their own to share just a few of the ways we show God's love in practical ways.



Our Blessings cupboard (stocked by donations of food, toiletries etc.) is in demand, supporting local families in need.

We have very good links with all our local schools, with Revd Malcolm and members going in to schools to lead worship, and children and staff coming into church at festivals.



We are affiliated with the Biker Church, a church run by bikers, primarily for bikers, but whose doors are wide open to everybody. They hold an evening service once a month plus two Biker breakfasts each year in St John's and are a big part of our church family.

Our multi-purpose building is a bustling place and is open 7 days a week, offering space which organizations hire and community groups use for meetings throughout including an organization working with adults with learning disabilities who run the 'Lunchbox Café two days a week and has its offices on the first floor of the Welcome Centre, National Teaching & Advisory Service working with young people excluded from main stream education, Slimming World and more.



This is alongside church led groups such as Weekly Prayer Warriors, Wellbeing Wednesday, a free drop in café run by church members alongside Keys recovery group meeting, plus a local community link worker and various groups and agencies regularly attend and are available for local residents to obtain advice, and Bible study Group.

St. John's is a Keys Recovery Centre, where we provide a safe detox in the community and recovery support through weekly meetings. This is headed up by a church member. The three Keys to freedom from addiction we use are:

Community (church family) - Spiritual (12 Step programme) - Medical (overseen by a doctor)





In 2023 we began a monthly meeting called 'Man Up' which is affiliated with Christian Vision for Men (CVM). It's a place where men can socialise, worship and further their faith. We can be open and honest with each other and hold each other accountable within our Christian lives. Every month we go through the CVM's 12 codes of conduct. There is a core of 12 members who meet each month and have attended the annual gathering building and strengthening relationships.

We have seen real growth in recent years with increased attendance and we continue to build on well-established links with the community.

As always this does not come without its challenges. Finance as always is one of the main challenges we face. We are mindful of using our resources wisely. Giving is steadily increasing and we have been very blessed with some significant donations to help balance the books over recent years for which we are extremely thankful.

As numbers attending and becoming involved in the Church and Centre increase, this also brings the challenge of building new relationships and giving people opportunities to grow. With a number of people stepping up into new roles we are currently focusing on teaching and discipleship in response to this.

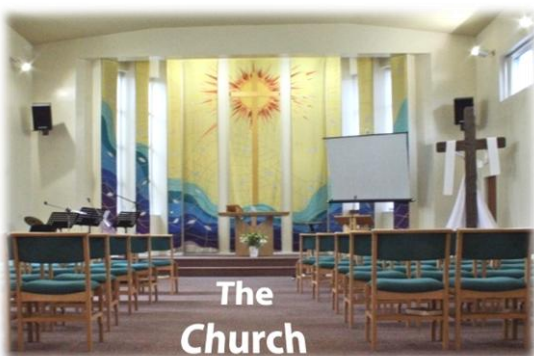


We have a modern building with excellent facilities for church and community use. The brick structure dates from the 1960s but benefited tremendously from major refurbishment in 1999.

The main worship area, hall with café area, prayer room and toilets are all on the ground floor;

the 1st floor comprises a suite of meeting rooms and office accommodation.

There is a small car park to the front, and no graveyard.



St. Stephens Community Church, Bentilee

We are passionate about serving God and serving our community of friendly, down to earth, generous-hearted people. We have a strong desire to reach out to the surrounding estate and bring these people to Jesus.

Our worshipping community is a mix of ages, averaging 23 adults and 10 children & young people. Worship is informal and contemporary, with Holy Communion celebrated every other week. This service seeks to be interactive with every person being engaged and included. Our Sunday Club provides teaching and nurture for our children and young people linked to the theme of the day.



As part of our desire to engage with our community a team are currently going out onto the estate, connecting with people where they are, knocking on doors, offering prayer and sharing the 'Good News of Jesus'.

We are encouraged and excited about the recent development of a closer working relationship with St John's.

With a hope of reaching out to the men in Bentilee, we are launching a new 'Man Up Group' based in St Stephen's, supported by members from the group who meet at St John's. Members will also be encouraged to attend the monthly Parish men's breakfast at the Marychurch Centre.



Our teens have thoroughly enjoyed connecting with others from across the parish, attending the Blaze city-wide prayer events, gathering young Christians from across the city and going to the 'Limitless Festival' at Stafford.

We have hosted the recent 'Parish Youth Alpha' and are thrilled to see a number of our young people stepping up into new roles, training to be young leaders, stepping out to share their faith with their peers, and a new home-grown youth worship group taking a lead during our services.

We look to continue to build on the work in recent years, organizing community events at main festivals and seasons including Mother's Day Afternoon Tea, Easter Egg trail and Easter crafts. Our Christmas Eve Craft afternoon was very popular with 80+ people attending in 2024 to enjoy activities and hear the Christmas story.

We are thankful for the support and grants that we receive from local councilors, shops and associations towards the cost of these events.



Alongside these special events our weekly activities continue with our Tuesday morning prayer and support group led by a church member, offering a 'Place of Welcome' to all, and our Community Café on Thursday's offering food at reasonable prices, with volunteers available to chat and pray with people as required.

We have initiated a monthly service at a local care facility.

We are also a local Foodbank Centre linked with the Trussell Trust supporting some of the City's and parish's most vulnerable families. This is run by a team of volunteers from our church, parish and the local community.

We are excited by the opportunities, but also mindful of the challenges.

Whilst we have some dedicated long-time members of the church who contribute a great deal of their time and energy to serving the Lord, we are aware that church numbers remain low, as some struggle with chaotic and busy lives and others are growing older.

We are praying and working for steady growth helping people to grow and mature in faith and seeking to raise up new leaders.

We would like to re-open our Toddler and carer group when the time is right.

Whilst finances continue to be a challenge we seek to be faithful stewards of the resources that we have. We are so grateful to God for His faithfulness.



St Stephen's Church is situated in the middle of a large housing estate (c.12,500), predominantly Local Authority owned, with some Housing Association and private housing. The hall and meeting room are regularly hired for children's parties, and by local community groups.

The Church building dates from 1956, and currently requires attention particularly to the roof. We are in the process of obtaining quotes for a new roof and beginning the challenging process of seeking funding towards this.



The Bentilee District Centre is situated next to St Stephen's. This provides a 'one-stop shop' with a number of services including City Council, Library and Health.

Kingsland C E Academy

Kingsland Church of England Academy is larger than average with 504 pupils currently on roll. We are a two form entry school. We are also proud to be Apple Regional Training Centre for Stoke-on-Trent.



At Kingsland Church of England Academy we ‘Walk in the Light with Jesus’ and our Christian ethos is at the heart of everything we do. We are proud to have Children’s and Community Chaplain, Rev. Rob. He is based at our school and works within the St. Bart’s Multi Academy Trust working alongside our Peer Chaplain’s, Worship Team and the school ‘Kingsland Chorus’ choir. Together we see them as sharing love with other children and staff, especially for those who need additional support, comfort, time for reflection/prayer or a listening ear which impacts positively on mental health and well-being.



Throughout the academic year, Rev. Rob and the children visit our local community and lead worship and prayers, sing songs and bless them with God’s love.

“The school’s partnership with the Parish of Bucknall and its clergy is exceptional. Staff, pupils, and parents alike benefit enormously from the pastoral guidance and support offered by the team. They work closely with school leaders and the school chaplain to provide a framework of support for the spiritual and personal wellbeing of the whole community.” SIAMS 2024



Opened by Bishop Michael in 2018, our Lighthouse Centre is a pioneering project between Kingsland C of E Academy and the Diocese of Lichfield. It is a community hub for our parents to engage with weekly workshops to support them and their child’s education. There are also opportunities for our community to join in with Sunbeams toddler sessions, baby massage and Messy Monsters groups.



Our Lantern Cafe is open daily where lunches, cakes and coffee are enjoyed. We regularly hold community lunches and our children join with our older generation to share crafts and activities together. All of the profits from our Lantern Cafe are used to support our children and families. During the holidays children can join in with activities and have a hot meal provided this helps those that need an extra blessing. The Lighthouse Centre aims to invest in our community so that positive relationships are developed, and the community supports each other.

“The school’s work with vulnerable pupils and their families is exceptional. Through the Lighthouse Centre and the Lantern Cafe, the school is transforming lives within the local community.” SIAMS 2024



We are delighted that Kingsland Church of England Academy has been invited to be part of a new mission project with the Lichfield Diocese. This project is to develop a new worshipping community at the school with a focus on children and families.

We anticipate that our new Team Rector will be involved in school life, leading collective worship and working with Rev Rob and the team in facilitating mission through the Lighthouse Centre and the development of a new worshipping community within the school.

The Rectory



Both the Rectory & St Mary's Church are central within Bucknall.

The house is a detached property in very good condition and is situated next to the Marychurch Centre and is a two minute walk from St Mary's Church.

Downstairs there is a study, lounge, dining room, kitchen, utility and internal access to the attached garage. Upstairs there are four bedrooms, a family bathroom and separate toilet. The house benefits from central heating and double glazing.

There is off road parking and an enclosed garden to the rear of the property.

Within five minutes' walk of the Rectory are local amenities including a chemist, doctors, two pubs, various fast-food outlets, a pharmacy and an Asda store. Other supermarkets are in nearby Hanley and Stoke.



The nearby 'Bucknall Park' contains the City Farm, bowling green, tennis courts, football pitches and a small play area. There are good links to the canal towpath nearby



In addition to Kingsland C.E. Academy (part of St Bart's Trust) there are a number of primary schools in the parish with whom we have excellent relationships and support their collective worship curriculum.

As a city, Stoke on Trent boasts a number of secondary schools, those in our neighbouring parishes including the St. Peter's Academy, The Discovery Academy, Birches Head Academy and Moorside Secondary School. Pupils from the parish also attend St. Joseph's College.

Stoke-on-Trent 6th Form College and Staffordshire University are approximately two miles away near to Stoke Railway Station. There is significant redevelopment of this area currently taking place.

In addition to the main area of Bucknall there are the large private estates of Eaton Park & Berryhill which include significant provision for elderly people.



In the local town of Hanley we have the Potteries Shopping Centre plus the Cultural Quarter where you will find the Regent Theatre, Mitchell Memorial Theatre and The Potteries Museum.



Nearby we have the Trentham Estate , where you can wander around the formal gardens, Shopping Village and Garden Centre, visit the monthly Makers Market or stop for a cuppa and a bite to eat. There is good access to road and rail links.



Wider and within the City

The Bucknall Team has always made a positive contribution to ecumenical work

Locally there are good relationships with other Christian churches within our Parish (Methodist, Roman Catholic, Pentecostal). In practice this mainly focuses around the Remembrance Day Service at the Cenotaph.

We participate in a number of city-wide initiatives :

Members from across all three churches support and attend city-wide gatherings which are organized by Saltbox Christian Centre (www.saltbox.org.uk) – a non-denominational agency – is a platform for faith groups to engage with civic and secular authorities, encouraging and assisting them in raising the profile of Christian faith within North Staffordshire



We have good links with Blaze and Junction Youth. Our young people enjoy opportunities to attend Blaze events and have recently attended the 'Limitless Festival' in August.



Following this a new Youth Alpha Group has begun in our parish with members from all three churches attending. Some of our older youth are beginning training as young leaders themselves.

Stoke-on-Trent is home to Cross Rhythms City Radio (one of our church members is a regular presenter) and UCB (United Christian Broadcasters).

Members of our parish volunteer with Night Church Stoke – We bring the light to the night. We're a group of Christian volunteers, ignited by prayer, enjoying community, aiming to transform the city centre through mission at night!

