



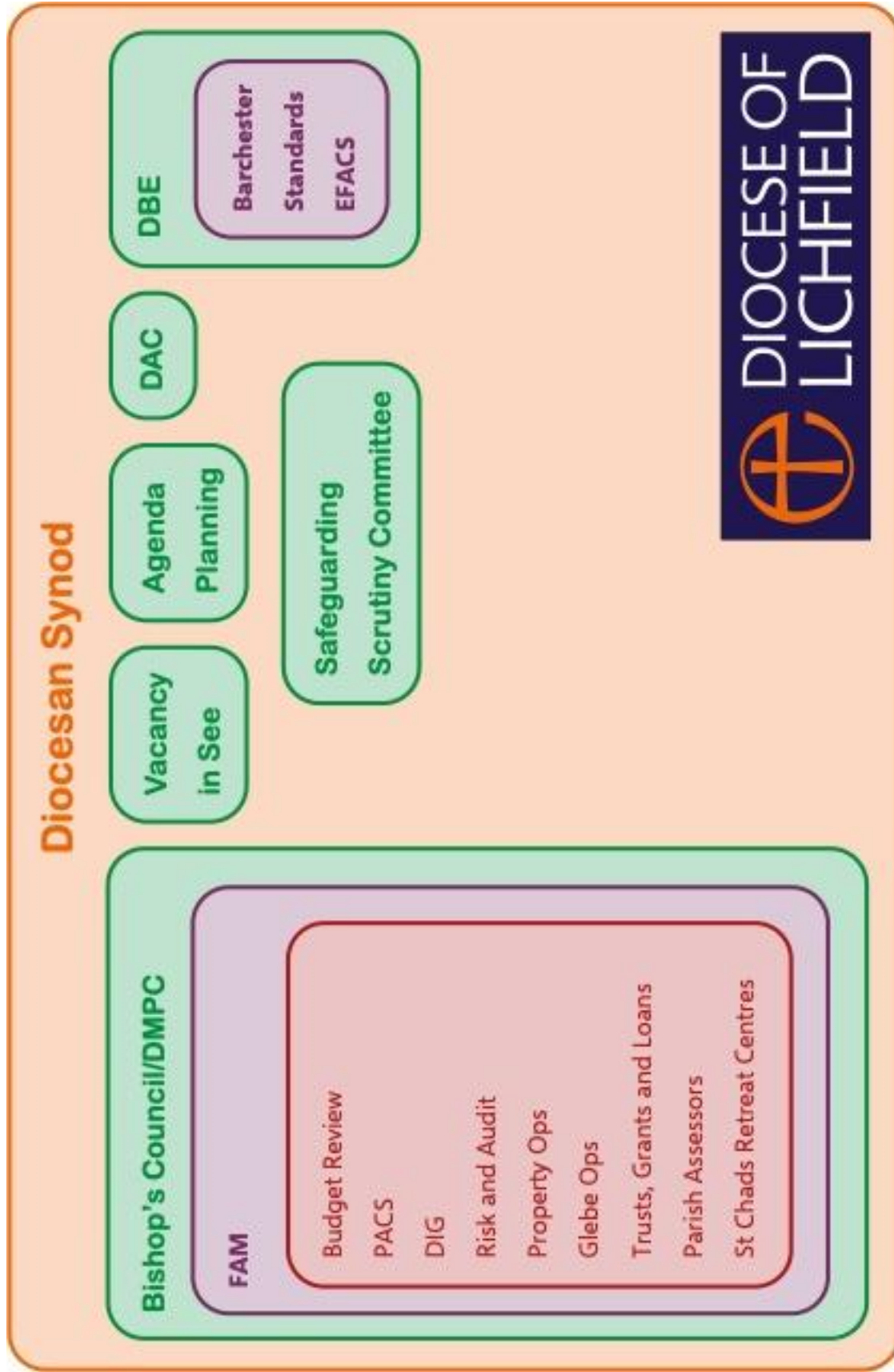
**DIOCESE OF  
LICHFIELD**

**Lichfield Diocese  
Governance Handbook**

---

**Updated September 2024**

# Governance Map



## Table of Contents

<b>Governance Map .....</b>	<b>1</b>
<b>Bishop’s Staff Meeting (BSM) .....</b>	<b>7</b>
<b>Diocesan Synod.....</b>	<b>8</b>
Origin of Diocesan Synod.....	8
Role/Terms of Reference of Diocesan Synod.....	8
Membership of Diocesan Synod .....	8
President:.....	8
House of Bishops.....	8
House of Clergy Ex-officio .....	8
Elected clergy members.....	9
Co-opted clergy members .....	9
House of Laity Ex-officio.....	9
Elected lay members .....	9
Co-opted lay members .....	9
Nominated Members .....	9
Elections to Diocesan Synod.....	9
Procedures and practice for meeting of Diocesan Synod.....	9
<b>Lichfield Diocesan Board of Finance (LDBF) .....</b>	<b>11</b>
Origin of LDBF .....	11
Membership of LDBF.....	11
<b>Bishop’s Council and Standing Committee of Diocesan Synod.....</b>	<b>12</b>
Role/Terms of Reference of Bishop’s Council .....	12
Accountability of Bishop’s Council.....	12
Membership of Bishop’s Council .....	12
Ex-officio .....	12
Elected.....	12
Nominated and co-opted members .....	12
In attendance .....	13
Elections to Bishop’s Council.....	13
Procedures and practice for meeting of Bishop’s Council and Standing Committee.....	13
<b>Agenda Planning Committee (Agenda Planning) .....</b>	<b>14</b>
Origin of Agenda Planning .....	14
Role/Terms of Reference of Agenda Planning .....	14

Membership of Agenda Planning.....	14
Procedures and practice for meeting of Agenda Planning Committee.....	14
<b>Diocesan Mission and Pastoral Committee (DMPC) .....</b>	<b>15</b>
Origin of Diocesan Mission and Pastoral Committee .....	15
Structure and constitution .....	15
Introduction.....	15
Structure .....	16
Duties and Purposes of the LDMPC .....	17
Permanent Sub-Committees of the LDMPC .....	19
Duties and Purpose of the Area Mission and Pastoral Committees .....	20
Process of Pastoral Schemes.....	20
Ad hoc sub-committees.....	21
Footnotes .....	21
Constitutions of Area Mission and Pastoral Committees.....	23
Shrewsbury Area Mission and Pastoral Committee (ShAMPC).....	23
Stafford Area Mission and Pastoral Committee (StAMPC) .....	25
Wolverhampton Area Mission and Pastoral Committee (WAMPC) .....	25
Constitution of the Closing and Closed Churches Group (CCCG) .....	27
<b>Lichfield Diocesan Advisory Committee (DAC) .....</b>	<b>29</b>
Role/Terms of Reference of the DAC.....	29
Membership of the DAC .....	29
Miscellaneous.....	30
Ex-officio .....	31
Nominated.....	31
Procedure and practice for DAC meetings.....	31
<b>Vacancy in See Committee (VIS) .....</b>	<b>32</b>
Origin of VIS .....	32
Membership.....	32
Procedure and practice for VIS meetings .....	32
<b>Finance and Asset Management Committee (FAM) .....</b>	<b>33</b>
Role/Terms of Reference of FAM.....	33
Membership of FAM .....	33
Procedures and practice for meetings of FAM .....	34
<b>Budget Review Group (BRG).....</b>	<b>35</b>

Origin of BRG.....	35
Role/Terms of Reference of BRG.....	35
Membership of BRG .....	35
Procedures and practice for meetings of BRG .....	35
Frequency of meetings .....	35
Attendance.....	35
Accountability .....	35
<b>Diocesan Investments Group (DIG) .....</b>	<b>36</b>
Origin of DIG .....	36
Role/Terms of Reference of DIG .....	36
Objectives of DIG .....	36
Membership of DIG .....	36
Procedures and practice for meetings of DIG .....	36
Frequency of meetings .....	37
Attendance.....	37
Accountability .....	37
<b>Glebe Operations Group.....</b>	<b>38</b>
<b>Terms of Reference.....</b>	<b>38</b>
Frequency of meetings .....	38
Attendance.....	38
Accountability .....	38
<b>Membership of Glebe Operations Committee .....</b>	<b>38</b>
<b>Property Operations Group .....</b>	<b>38</b>
Frequency of meetings .....	39
Attendance.....	39
Accountability .....	39
<b>Trusts Projects Loans and Grants Committee (TPLG) .....</b>	<b>39</b>
Origin of TPLG .....	39
Role .....	39
Terms of Reference .....	39
Objectives .....	39
Diocesan Trust.....	39
Mercian Community Trust.....	39
Loans .....	39

Projects .....	40
Grants .....	40
Membership .....	40
Frequency of meetings .....	40
Attendance .....	40
Accountability.....	40
Parish Loans and Grants Loans.....	41
Projects .....	41
Grants .....	41
<b>Parish Assessors Sub-Committee (PASC) .....</b>	<b>42</b>
Origin of PASC .....	42
Role/Terms of Reference of PASC.....	42
Level of Authority.....	42
Membership of PASC .....	42
Ex-officio .....	42
Archidiaconal Sub-groups.....	42
Chair .....	42
Procedures and practice for meetings of PASC .....	43
Meetings.....	43
Secretariat .....	43
Strategic Thinking Group .....	43
<b>Pay and Conditions Committee (PACS) .....</b>	<b>44</b>
Origin of PACS .....	44
Role/Terms of Reference of PACS.....	44
Membership of PACS .....	44
Procedures and practice for meetings of PACS .....	44
<b>Risk and Audit Committee .....</b>	<b>45</b>
Accountability and Origin .....	45
Role/Terms of Reference of Risk and Audit Committee .....	45
Membership of Risk and Audit Committee .....	45
Procedures and practice for meetings of Risk and Audit Committee .....	45
<b>Safeguarding Scrutiny Panel (SSP) .....</b>	<b>45</b>
Terms of Reference of SSP .....	46
Membership of SSP .....	46
Meetings .....	46

Accountability.....	46
<b>St Chad’s Retreat Centres .....</b>	<b>47</b>
Role/Terms of reference of St Chad’s Retreat Centres .....	47
Directors/Trustees of St Chad’s Retreat Centres .....	47
Procedures and practice for meetings of St Chad’s Retreat Centres .....	47
<b>DBE Committee .....</b>	<b>48</b>
Membership of the DBE Committee.....	48
Functions of the DBE Committee.....	48
<b>Board of Education Finance Committee (EFC).....</b>	<b>49</b>
Origin of EFC .....	49
Role/Terms of Reference of EFC .....	49
Membership of EFC.....	50
In attendance .....	50
Procedures and practice for meetings of EFC.....	50
<b>Barchester Committee.....</b>	<b>50</b>
Origin of Barchester .....	50
Terms of reference: .....	51
Membership of Barchester.....	51
In Attendance:.....	51
Quorum: .....	52

## Bishop's Staff Meeting (BSM)

The Bishop's Staff meeting is not a formal part of the governance structure but is nonetheless integral to the efficient working of the diocese and its area scheme.

It has four functions:

- To act as a 'think tank' where the Diocesan Bishop can develop ideas and shape his/her vision for the diocese.
- To ensure that the pastoral care and development of the clergy remains paramount
- To ensure there is a consistency of approach to pastoral and managerial issues across the three areas and the central sector.
- To provide as space where all BSM members can find mutual personal support and theological reflection



## Diocesan Synod

### Origin of Diocesan Synod

A statutory Body established by the **Synodical Government Measure 1969** (and **Church Representation Rules**). The **Church Representation Rules** were originally enacted as Schedule 3 to the **Synodical Government Measure 1969** and have been continually updated since then.

The Rules are a vital tool for all those involved in parochial, diocesan and national Church governance. In particular, the Rules govern the preparation of the church electoral roll, the conduct of annual parochial church meetings, and the membership and election of PCCs, deanery synods and diocesan Synods. <http://www.churchofengland.org/about-us/structure/churchlawlegis/church-representation-rules.aspx>

### Role/Terms of Reference of Diocesan Synod

- To consider matters concerning the Church of England and to make provision for such matters in relation to their diocese, and to consider and express their opinion on any other matters of religious or public interest;
- To advise the bishop on any matters on which he/she may consult the synod (It shall be the duty of the bishop to consult with the Diocesan Synod on matters of general concern and importance to the diocese)
- To consider and express their opinion on any matters referred to them by the General Synod, and in particular to approve or disapprove provisions referred to them by the General Synod under Article 8 of the Constitution
- To consider proposals for the annual budget for the diocese and to approve or disapprove them;
- To consider the annual accounts of the diocesan board of finance of the diocese.

### Membership of Diocesan Synod

A Diocesan Synod shall consist of a House of Bishops, a House of Clergy and a House of Laity (see Part E of the Diocesan Standing Orders for membership details)

#### President:

- The Diocesan Bishop
- Area bishops, the chair of the House of Clergy and the chair of the House of Laity are Vice-Presidents of Synod.

#### House of Bishops

The Bishop of the diocese, every suffragan bishop of the diocese and such other person or persons, being a person or persons in episcopal orders working in the diocese, as the Bishop of the diocese, with the concurrence of the archbishop of the province, may nominate.

#### House of Clergy Ex-officio

- any person or persons in episcopal orders nominated by the Bishop of the diocese, other than a suffragan bishop or a person nominated as above
- the Dean of the Cathedral
- the Archdeacons (four)
- the proctors elected from the diocese or from any university in the diocese

## Governance 2021

- any other member of that House, being the person chosen by and from among the clerical members of religious communities in the Province, who resides in the diocese;
- the Chancellor of the diocese (if in Holy Orders)
- the Chair of the Diocesan Board of Finance (if in Holy Orders)
- the Chair of the Diocesan Board of Education (if in Holy Orders)
- the Chair of the Diocesan Advisory Committee (if in Holy Orders)
- and the Chair of the Diocesan Board of Education (if in Holy Orders)

### Elected clergy members

- members elected by the houses of clergy of the deanery synods in the diocese in accordance with the rules;

### Co-opted clergy members

- not more than five members (being clerks in Holy Orders) co-opted by the house of clergy of the Diocesan Synod.

### House of Laity Ex-officio

- the Chancellor of the diocese (if not in Holy Orders)
- the Chair of the Diocesan Board of Finance (if not in Holy Orders)
- the Chair of the Diocesan Board of Education (if not in Holy Orders)
- the Chair of the Diocesan Advisory Committee (if not in Holy Orders)
- the members elected from the diocese to the House of Laity of the General Synod
- any other member of that House, being an ex officio or co-opted member of the House of Laity of the General Synod or a person chosen by and from among the lay members of religious communities in the Province, who resides in the diocese

### Elected lay members

- members elected by the houses of Laity of the deanery synods in the diocese in accordance with the next following rules;

### Co-opted lay members

- not more than five members co-opted by the House of Laity of the diocesan synod, who shall be actual communicants of age to vote at a Parliamentary election.

### Nominated Members

The bishop of the diocese may nominate ten additional members of the Diocesan Synod, who may be of the clergy or the laity and shall be members of the appropriate House.

### Elections to Diocesan Synod

Every three years, the House of Clergy and the House of Laity elect members to Diocesan Synod. Those elected hold office for three years beginning with 1<sup>st</sup> August following their election. Co-opted and nominated members shall retire on the last date for the return of results of the triennial elections. Current synod elected August 2015; next elections 2018.

### Procedures and practice for meeting of Diocesan Synod

Diocesan Synod is managed in accordance with its Standing Orders (latest revision 2015).

## Governance 2021

Diocesan Synod meets three times a year; In March and October on Saturday (day) and in June (evening). The Diocesan Bishop chairs the initial session of the meeting (introductory, previous minutes, farewells, notices, etc.); then Synod is chaired alternately by the Chair of House of Laity/Chair of the House of Clergy for different sessions.

Agendas are set at agenda planning meetings (by the Bishop's Council Agenda Planning Committee) and, amongst other items, includes a report to Diocesan Synod from General Synod, and a summary report of Bishop's Council meetings held since the last Synod.

Papers are sent out by post 21 days in advance.

During the 21 days any questions have to be notified in writing at least 10 days in advance of the meeting. The CEO (who is also Secretary to Synod) ensures any questions are passed to the appropriate officer and a response is sent at least a day before the meeting. The CEO ensures the appropriate officer is in attendance on the day – the questioner is allowed up to two supplementary oral questions at the meeting.

Any Other Business agenda item should technically be used only for members to raise any issues they would like placed on a future Diocesan Synod Agenda.

Minutes are taped. Draft minutes are produced and emailed to the CEO and Chair of the Lichfield Diocesan Board of Finance for verification. Accurate but not verbatim minutes are required in which key points should be recorded, together with any agreed/suggested actions. Copies of verified Minutes after verification (although before signing at next Diocesan Synod) may be emailed to the Chair of the House of Clergy and the Chair of the House of Laity and the Diocesan Bishop. The audio files of proceedings together with related paperwork are available on the diocesan website.

## Lichfield Diocesan Board of Finance (LDBF)

### Origin of LDBF

The Lichfield Diocesan Board of Finance was established under the Diocesan Boards of Finance Measure 1925 and registered as a charity with the Charity Commission (Charity number 1107827 - for further details see <http://www.charity-commission.gov.uk/index.aspx>)

The LDBF is a charitable company, limited by guarantee, (Company number 00239561; incorporated 14/05/1929) with members of the Bishop's Council as Directors.

It is the financial and legal executive of the Diocesan Synod and is responsible for financing its activities. The LDBF through its Finance and Assets Management Committee, Bishop's Council and Diocesan Synod agrees an annual expenditure budget. Its roles and responsibilities are the same as Diocesan Synod's.

The company is governed by Memorandum and Articles of Association dated 14 May 1929 as amended by special resolutions dated 6 February 1968, 18 June 2003, 13 March 2004 and 24 June 2015.

A Register of Interests is maintained.

### Membership of LDBF

The Council or Executive Committee (which is the same as Bishop's Council of Diocesan Synod) manages the affairs of the Board, whose members are defined in the Memorandum and Articles of Association.

The Chair will be elected by Diocesan Synod at the start of each triennium.

# Bishop's Council and Standing Committee of Diocesan Synod

## Role/Terms of Reference of Bishop's Council

The Bishop's Council is responsible for considering matters of policy, for advising the Diocesan Bishop, and for determining how matters should be taken forward to the Diocesan Synod for further consideration. To do this, the Bishop's Council handles a wide range of financial and strategic business, and considers issues raised by the Diocesan Board of Education, and the LDBF's sub-committees, the deaneries and the national church. Members act as Directors and Trustees of the Diocesan Board of Finance, a limited company and registered charity, and are responsible for the management of finance subject to the direction of the Synod; members also act as the membership of the statutory Lichfield Diocesan Mission and Pastoral Committee.

Full details of the role are listed in Diocesan Synod Standing Orders, the Memorandum and Articles of Association and the Lichfield Diocesan Mission and Pastoral Committee constitution but are broadly –

- To fulfil the legal obligations of trusteeship (fiduciary obligations as trustees and directors of the Lichfield Diocesan Board of Finance)
- To discuss and approve the vision, priorities and financial limitations of the diocese
- To monitor budget spends and achievements against strategic objectives (by department)
- To carry out work under the Mission and Pastoral Measure 2011

## Accountability of Bishop's Council

The Bishop's Council is accountable to the Diocesan Synod

## Membership of Bishop's Council

### Ex-officio

- The President (Chair) – Diocesan Bishop
- All other members of the House of Bishops
- The Dean of the Cathedral
- The Archdeacons
- The Chair of the Lichfield Diocesan Board of Finance
- The Chair of the Board of Education

### Elected

Members elected from among the members of the Synod:

- The Chair of the House of Clergy
- The Chair of the House of Laity
- Four clergy members
- Eleven lay members

### Nominated and co-opted members

- A maximum of two members may be nominated by the President
- A further two may be co-opted by Bishop's Council

## In attendance

- Diocesan CEO (Secretary of the Council as Secretary of the Synod)
- Finance Director
- Diocesan Pastoral Officer
- Other diocesan Directors of Departments as necessary

## Elections to Bishop's Council

All elected members are to be elected by the House of which each is a member, immediately after the election of a new Synod, and the total number of the Council, including ex-officio members, shall not exceed 32 or be less than 28.

## Procedures and practice for meeting of Bishop's Council and Standing Committee

6 meetings per year (although the July meeting is flexible and may not take place) between 5.30-9.00 on a weekday evening

The meeting is conducted in three sections – the first related to synodical and Central Sector work which is chaired by the President; the second related to statutory (Lichfield Diocesan Board of Finance) work - that which relates to fiduciary duties – which is chaired by Chair of Lichfield Diocesan Board of Finance; the third related to the statutory work of the Lichfield Diocesan Mission and Pastoral Committee, chaired by the Diocesan Bishop but guided by the Diocesan Pastoral Officer.

Agendas are set at agenda planning meetings (by the Bishop's Council Agenda Planning Committee) and sent out with associated papers by email approximately two weeks in advance.

The Minutes are recorded; draft Minutes are prepared and emailed to the Diocesan Secretary and the Chairman of Lichfield Diocesan Board of Finance; the final Minutes are emailed with the papers for the next meeting.

**Note:** Copies of verified Minutes (although before signing at next Bishop's Council) may be emailed to the Chair of the House of Clergy and the Chair of the House of Laity and the Diocesan Bishop for information.

**Note:** A summary of Bishop's Council meetings is prepared for Diocesan Synod.

## Agenda Planning Committee (Agenda Planning)

### Origin of Agenda Planning

Agenda Planning shall be a non-statutory sub-committee of the Bishop's Council (provided for by Standing Orders). Agenda Planning is therefore accountable to Bishop's Council.

### Role/Terms of Reference of Agenda Planning

To ensure a smooth flow of business to the Bishop's Council and to the Diocesan Synod by:

- Preparing the agenda for diocesan synod on behalf of Bishop's Council
- Planning the agenda of Bishop's Council.
- Reviewing Synod's Standing Orders when required

### Membership of Agenda Planning

- The Diocesan Bishop as President (and Chair of the House of Bishops) or the Bishop's Chaplain/Bishop's Lay Assistant
- The Chair of the House of Clergy (or representative)
- The Chair of the House of Laity (or representative)
- The Chair of the Lichfield Diocesan Board of Finance
- Two members nominated by and from the Bishop's Council (this membership is reviewed post the triennium elections)
- The Secretary of Synod (Diocesan CEO)

### Procedures and practice for meeting of Agenda Planning Committee

- Meets a minimum of three times a year prior to each Diocesan Synod.
- The quorum for the meetings shall be three
- It should report to Bishop's Council a forecast of future expected synodical business

## Diocesan Mission and Pastoral Committee (DMPC)

### Origin of Diocesan Mission and Pastoral Committee

A statutory committee originally established by Diocesan Synod under the Dioceses, Pastoral and Mission Measure 2007 which provided for a new committee to be appointed by 31 August 2009 in each diocese to replace the Pastoral Committee and the Redundant Churches Uses Committee. These functions are now contained in the Mission and Pastoral Measure 2011, with Schedule 1 of this Measure providing for its constitution and procedure.

The Measure directs that Diocesan Synod shall provide the Mission and Pastoral Committee with a written constitution or, if the committee is reconstituted as mentioned in subsection (3), an amended or new written constitution, which shall comply with the provisions of Schedule 1 (Mission and Pastoral Measure 2011, Part 2; Para.2, 1-4)

Originally approved by Bishop's Council 26 February 2009 (copy held) and approved by Synod 28th March 2009; reviewed and re-approved 2014; further modified 2016.

### Structure and constitution

#### Introduction

- 1.1 The overall responsibility for mission, pastoral care and ministry in the Diocese of Lichfield belongs to the Diocesan Bishop. He/she shares this with his/her episcopal colleagues. The role and responsibility of the Diocesan Synod, in this regard, stem from the need to resource this mission and ministry.
- 1.2 The strategic responsibilities for mission (pastoral, evangelistic, social and ecumenical) are clearly matters that relate to the role of the Bishop's Council as it advises and supports the bishop in his/her overall responsibility for pastoral care and ministry. The Bishop's Council/Standing Committee will form the Lichfield Diocesan Mission and Pastoral Committee. The Bishops Council/Standing Committee will take responsibility for ensuring that the policies of the Diocesan Synod are carried out with respect to the deployment of ministry resources, in particular stipendiary clergy, available to the diocese. This provides an opportunity to introduce a structured and holistic approach to the provision of ministry, its deployment and resourcing, as well as the development of new areas of ministry, with clear intent to further the mission of the church.
- 1.3 The Lichfield Diocesan Mission and Pastoral Committee (LDMPC) in its new formulation will replace the present Diocesan Mission and Pastoral Committee and will be drawn up as required under the Mission and Pastoral Measure 2011 (MPM 2011)
- 1.4 The MPM 2011 (Part 1, Section 1) states that:  
"It shall be the duty of any person or body carrying out functions under this Measure or the Pastoral Measure 1983 to have due regard to the *furtherance of the mission* of the Church of England."  
The DPMM further defines mission as "the whole mission of the Church of England, pastoral, evangelistic, social and ecumenical".
- 1.5 The LDMPC shall have the same membership as the Bishop's Council/Standing Committee.



In order to comply with the provisions of the MPM 2011, that as far as possible there should be an equal number of ordained and lay members, one additional lay person shall be co-opted onto the BC/SC.

- 1.6 The approval of a constitution by the Diocesan Synod and any subsequent amendments approved by the Synod are required by MPM 2(4) and must accord with the outline constitution and procedure set out in Schedule 1 to the Measure.

## Structure

### 2 Membership of the LDMPC

The membership of the LDMPC shall be the same as the membership of the Bishop's Council & Standing Committee with due regard to the provisions of the MPM 2011 with respect to the balance of lay and ordained members.

- 2.1 The Committee (and any sub-committee) shall have power to appoint persons who have appropriate expertise, whether or not as members of another body, to provide advice on any of their functions.
- 2.2 The LDMPC shall, in carrying out any of its functions, to the extent that it thinks appropriate, consult any other persons or bodies, whether within the Church of England or not, which exercise functions or carry out activities relevant to the functions of the committee. (MPM 2011 S3(4))
- 2.3 The Committee may delegate any of its functions to the Area Mission and Pastoral Committees except its duty under section 6(5) or 21(4) of the MPM 2011 (to afford opportunities to incumbents of benefices and vicars in team ministries to meet the committee itself) and its functions under Schedule 4 to that Measure.
- 2.4 The LDMPC will consider proposals from each Episcopal Area with respect to the structure and membership of the Area Mission and Pastoral Committee.

### 2.5 Chair

The chair of the LDMPC may be the Bishop of the diocese if he/she so wishes. If the Bishop is not the chair the Bishop shall appoint a chair either from the membership of the Bishop's Council or co-opt a person to be the chair. The chair shall be a full member of the Bishop's Council and of the Diocesan Synod.

### 2.6 Number of meetings and agenda

The business of the LDMPC will be undertaken as part of as many meetings of the BC/SC as may be required. The business of the LDMPC shall be conducted as part of the overall agenda of the BC/SC.

- 2.7 The agenda of the LDMPC may be located at any point in the overall agenda of the BC/SC in order to facilitate the better consideration of matters brought before it. The chair shall be consulted on the place in the agenda allocated to LDMPC business.
- 2.8 It will be necessary from time to time for the LDMPC to meet to hear representations from

incumbents (and others) concerning certain pastoral schemes. Under MPM 2011 6(5) this may not be delegated to a sub-committee. If representations cannot be heard as part of a scheduled meeting a special meeting will be called under the chairmanship of the LDMPC. Any special meeting must be quorate.

## **2.9 Attendance**

The quorum shall be not less than one third of the total members of the DMPC provided at least 6 elected and 2 ex-officio members of the DMPC are present but the DMPC may act notwithstanding any vacancy in its membership or any defect in its composition.

## **2.10 Officers of the Committee**

The Secretary of the LDMPC shall be the Diocesan Pastoral Officer. The Diocesan Secretary and other Directors of Diocesan Departments who would normally be in attendance at BC meetings shall be officers in attendance on the Committee.

## **Duties and Purposes of the LDMPC**

The duties that are set out in 3.1 below are those that are assigned to the Committee under the Measure.

### **3.1 It shall be the duty of the LDMPC and any Sub-Committees**

- a) to carry out its functions with due regard to the furtherance of the mission of the Church of England. In particular it shall have regard to worship, mission and community life as central to the life and work of the Church of England (see footnote 1.)
- b) to make or assist in making better provision for the cure of souls that come under the Episcopal oversight of the Bishop of Lichfield to the extent that the committee thinks appropriate, in particular parts of the diocese or in particular parishes;
- c) from time to time, as the Bishop may direct, or as the committee thinks fit, after consultation with the Bishop, to review arrangements for pastoral supervision and care of those under the Episcopal oversight of the Bishop of Lichfield to the extent that the committee thinks appropriate, in particular parts of the diocese or in particular parishes (including sharing agreements in respect of a church or parsonage house and any proposals for sharing agreements);
- d) to review from time to time as may be directed by the Bishop, and in any event at least once in every five years, the arrangements for pastoral supervision in each conventional district in the diocese and, in cases where they consider it desirable, to make recommendations to the Bishop for any of the matters for which provision may be made under the MPM 2011 (other than section 36) by a pastoral scheme or order;
- e) from time to time, as the Bishop may direct, or as the committee thinks fit, to prepare strategies or proposals for carrying out the committee's functions under paragraphs (b) and (c) above for submission to the Bishop and the diocesan synod for their approval;
- f) to maintain an overview of matters relating to church buildings in the diocese and their use, other than matters which are within the jurisdiction of the Consistory Court or within the statutory functions of the Diocesan Advisory Committee;
- g) in the case of listed buildings or buildings in a conservation area, to make every endeavour to

find a suitable alternative use or suitable alternative uses for churches which are proposed to be closed and buildings which have been closed for regular public worship in the diocese under a pastoral church buildings scheme and, in the case of any other such building, to develop proposals for the suitable alternative use or uses of the building or for the demolition of the building and the disposal of its site;

- h) where it considers it desirable, to make recommendations to the Bishop concerning a pastoral scheme or order, in accordance with section 6 and 21 of the MPM 2011 for any of the matters for which provision may be made under the Measure (other than section 36). (see also Process of Pastoral Scheme or Order, below);
- i) to carry out any other functions conferred upon a pastoral committee or a redundant churches uses committee of a diocese by Measure or any other enactment.

3.2 In carrying out any of its functions the LDMPC and any Sub-Committee shall have regard to –

- a) the financial implications for the diocese and the Church of England as a whole;
- b) the need to allocate appropriate spheres of work and to ensure that appropriate conditions of service are enjoyed by those employed or holding office in the diocese and, where relevant, that reasonable remuneration is provided for all those engaged in the cure of souls. (Subject to section 3 subsection (5) of the MPM2011: see footnote 3);
- c) the traditions, needs and characteristics of particular parishes;
- d) any other aspects of the policies of the Diocesan Synod to which the synod has requested the committee to have regard in discharging its responsibilities.

3.3 The LDMPC shall make report –

- a) annually to the Diocesan Synod on its activities during the preceding year and
- b) annually to the Commissioners on the exercise of its functions under section 3(3)€. (see footnote 2.)

3.4 In particular the LDMPC, in taking up particular responsibilities of the Standing Committee of Synod for strategic planning, shall:

- a) Consider the number of establishment posts (stipendiary clergy) within the Episcopal oversight of the Bishop of Lichfield; to do this in relation to information received from the national church; to maintain the post monitoring documents and records; to make allocation of stipendiary clergy numbers to archdeaconries and deaneries; to consider diocesan policy with respect to recruitment.
- b) Have an overview of the recruitment to and deployment of licensed lay ministries within the diocese.
- c) Consider the allocation and arrangements for title posts in relation to the allocation of such posts made to the diocese by the national church. This to be done in conjunction with the bishops and in liaison with the responsible Diocesan Officer(s).

3.5 To consider the sustainability of ministry and the personnel involved with particular regard to finance and housing.

3.6 Subject to the provisions of Schedule 1 of the MPM 2011 and to any directions given by the Diocesan Synod, the LDMPC shall have power to regulate its own procedure and that of any sub- committee and to provide for any other matters which it thinks fit.

3.7 The LDMPC may from time to time establish sub-committees and working parties as it deems

necessary to assist in the exercise of any of its duties and functions. The LDMPC is assisted by the Area Mission and Pastoral Committee details of which can be found under Permanent Sub-Committees of the LDMPC below.

### 3.8 Church Buildings

The LDMPC will consider redundancy and future use of church buildings in the Episcopal Areas of the Diocese of Lichfield.

3.9 Because matters relating to the use, development and redundancy of church buildings relate to the work of a number of diocesan departments it will be the responsibility of the Archdeacons to liaise with the DAC, the Area Mission and Pastoral Committees, other relevant Diocesan committees and other persons as required in considering matters of redundancy and future use. Pastoral church buildings schemes will be considered in the same manner as other pastoral schemes.

## Permanent Sub-Committees of the LDMPC

4.1 The Area Mission and Pastoral Committees. Each Episcopal Area within the Diocese of Lichfield shall have an Area Mission and Pastoral Committee which shall have delegated to it such matters as are set out in this constitution or as the LDMPC shall determine saving the exceptions already noted and provided for in the Measure.

4.2 Each Area Mission and Pastoral Committee shall have the power to regulate its own procedures, which shall follow, as far as practical, the procedures and regulations that govern the LDMPC.

4.3 The chair of the Area Mission and Pastoral Committee shall be either the Area Bishop or an Archdeacon.

4.4 The Area Mission and Pastoral Committee shall either appoint a minutes secretary from among its number or another person to take the minutes who shall not be a full member of the Committee.

4.5 The Diocesan Pastoral Officer will serve as executive secretary to each Area Mission and Pastoral Committee and shall oversee and co-ordinate the process of consultations, suspension, orders and schemes (see the role description for the Diocesan Pastoral Officer).

4.6 Deanery Mission and Pastoral Committees shall be considered, for the purposes of this constitution, as working parties of the Area Mission and Pastoral Committee and answerable to it. (See separate document outlining the role of the Deanery Mission and Pastoral Committees).

4.7 Membership of the Area Pastoral Committees. This varies but follows in part the requirement below:

- The Area Bishop ex officio
- The Archdeacon(s) of the Episcopal Area ex officio
- Not less than six other persons (of whom half should be lay and half ordained)
- In attendance: The Diocesan Pastoral Officer and the Minutes Secretary.

Whilst practice varies in each of the Episcopal Areas due to different contexts the general principle should be that the Area Mission and Pastoral Committee should reflect as far as possible the way in which responsibility for deployment is taken up within the Area. Where a significant responsibility for this is undertaken by Rural Deans and Lay Chairs they should be

represented on the AMPC.

In the first instance the Area Bishop and Archdeacon(s) of the Area will propose the make-up of the AMPC to the LDMPC for approval.

The LDMPC shall review the membership of the Area Mission and Pastoral Committees whenever it shall see fit and in any case not less than once every three years.

## **Duties and Purpose of the Area Mission and Pastoral Committees**

- 4.8 To consider the deployment of available ministerial resources in the light of the pastoral needs of the parishes and sector ministries of the Area concerned. To do this with regard to the mission of the church and the agreed policies of the diocese
- a) To receive and consider the plans for pastoral provision and pastoral re-organisation presented by any Deanery Mission and Pastoral Committees, including arrangements for post savings as appropriate or required by policy.
  - b) To initiate and monitor informal discussions concerning pastoral provision and re-organisation.
  - c) To issue, for consultation, draft proposals with respect to pastoral schemes and orders.
  - d) To prepare orders (including those for minor boundary changes) and present them to the Bishop for approval. All orders will be notified to the LDMPC.
  - e) To receive representations from interested parties (saving the right for certain interested parties to make representations to the LDMPC).
  - f) To forward proposals to the Bishop for approval.
  - g) To consider recommendations for suspension of presentation and to forward these to the Bishop for approval.
  - h) To report their activities to the LDMPC.
  - i) To receive as part of the plans of each Deanery Mission and Pastoral Committee their considerations of the use of buildings (especially churches) within the deanery as resources for mission. To receive advice from the Deanery Mission and Pastoral Committees on the development of new buildings and the need for closure.
  - j) With proper regard to the statutory duties of the DAC to consider proposals for church building and land development in the light of mission and ministry needs.
  - k) To advise and assist the LDMPC in its responsibility to find suitable alternative uses for churches which are proposed to be closed and buildings which have been closed for regular public worship in the diocese under a pastoral church buildings scheme or for the demolition of the building and the disposal of its site.
  - l) To bring forward proposals for the suitable extended use of church buildings.

## **Process of Pastoral Schemes**

- 5.1 The procedure for consideration, recommendation and the process of pastoral schemes shall be as follows.
- a) The Area Mission and Pastoral Committee (AMPC) to review pastoral arrangements with particular reference to Deanery Mission and Pastoral plans (as appropriate) and to note informal consultations with respect to particular proposals.
  - b) The AMPC to formulate draft proposals and undertake consultation with interested parties.

The LDMPC, through the Diocesan Pastoral Officer, to be informed of particular proposals and their progress.

- c) The AMPC to forward draft proposals and a statement of views expressed to the Bishop for approval.
- d) The Bishop to return approved proposals to the AMPC and the LDMPC via the Diocesan Pastoral Officer.
- e) The Diocesan Pastoral Officer to submit draft proposals to the Church Commissioners for validation. The Chair of the LDMPC, and/or the Chairs of the AMPCs, and the Secretary shall have delegated powers from the Committee, and/or the AMPCs, to approve the correction of any errors, the making good of any omissions, or any amendments that may be made by the Church Commissioners to any Scheme or Order during the validation process.
- f) The LDMPC to approve a set of draft proposals and issue draft schemes for consultation in accordance with the procedure set out in the MPM 2011 and the Code of Recommended Practice.
- g) The making of schemes to be reported by the Diocesan Pastoral Officer to the LDMPC, and the AMPCs.

Note: This sets out the formal process of approvals for schemes and is intended to show the demarcation of responsibility between the LDMPC and its sub-committees. In practice the AMPCs will keep the LDMPC as fully informed as possible so that the LDMPC can contribute to the pastoral planning for the diocese as a whole and be equipped to fulfil its duties as set out in 1 and 2 above.

In particular the LDMPC will receive copies of the Deanery mission and pastoral plans in order to assist fulfil the duty set out in 1(b), (c), (d) above.

### Ad hoc sub-committees

- 6.1 A sub-committee may be formed as required, to engage in discussions with interested parties or to hear from any person or body who may assist or advise the LDMPC regarding a particular proposal. Such a sub-committee shall comprise: an archdeacon, who will act as chair, and no less than two other members of the Committee. The Diocesan Pastoral Officer (or their substitute) shall attend any meeting to give advice. The Committee may request officers of the diocese to attend to offer their advice. The Committee shall make provision for the keeping of a record of any meeting.
- 6.2 See 2.8 above.
- 6.3 A sub-committee may be formed as required to undertake a particular piece of work on behalf of the Committee or to take on particular responsibilities on behalf of the Committee. The Committee shall decide upon an appropriate chairperson from among the members of the Committee and shall also decide upon the number of members of the Committee who will be members of the sub- committee, except that that number shall be at least two. The sub-committee shall have the power to appoint other persons with appropriate expertise to assist them in their work.

### Footnotes

Extracts from the MPM 2011

1. **S3(1)**

In carrying out any of its functions the mission and pastoral committee shall, without prejudice

to section 1 above, have regard to worship, mission and community as central to the life and work of the Church of England.

2. **S3(3)**

It shall be the duty of the mission and pastoral committee-

- (e) in the case of listed buildings or buildings in a conservation area, to make, in accordance with section 55, every endeavour to find a suitable alternative use or suitable alternative uses for churches which are proposed to be closed and buildings which have been closed for regular public worship in the diocese under a pastoral church buildings scheme and, in the case of any other such building, to develop proposals for the suitable alternative use or uses of the building or for the demolition of the building and the disposal of its site.

3. **S3(5)**

Nothing in this section shall enable the mission and pastoral committee—

- (a) to exercise functions conferred on any other person or body by or under any enactment, or  
(b) to fix or alter the terms of service of any person employed or holding office in the diocese.

Other Notes:

1. The MPM 2011 abolishes Diocesan Redundant Churches Committees and makes consideration of redundancy and future use of redundant churches a matter for the Diocesan Mission and Pastoral Committee. The MPM 2011 also states that this should not cut across the responsibilities of the DAC.

The full text of the Mission and Pastoral Measure 2011 may be found here:

<http://www.legislation.gov.uk/ukcm/2011/3/enacted>

The full text of the Code of Practice may be found here:

<http://www.churchofengland.org/clergy-office-holders/pastoralandclosedchurches/mpm2011code.aspx>

## Constitutions of Area Mission and Pastoral Committees

Approved Bishop's Council July 2014; reviewed, amended and proposed to Diocesan Synod 2016

### Shrewsbury Area Mission and Pastoral Committee (ShAMPC)

1. Reviewed by ShAMPC on 05/11/20 and agreed to keep the constitution the same.
2. Reviewed by ShAMPC on 21/01/21 and agreed to add the Associate Archdeacon of Salop to the membership of this committee. Approved by DMPC on 04/02/21 and Diocesan Synod on 13/03/21.

### Membership of ShAMPC

1. The Bishop of Shrewsbury (ex-officio and Chair)
2. The Archdeacon of Salop (ex-officio)
3. The Associate Archdeacon of Salop (ex-officio)
4. Additionally four clergy and four laity chosen as below:
  - i. One clergy membership and one lay membership to be offered to the Shrewsbury Area members of Bishop's Council for their joint agreement as to who should become members of the ShAMPC.
  - ii. One clergy membership to be offered to Shrewsbury Area Rural/Area Deans, for their joint agreement as to who should become a clergy member of the ShAMPC, and one lay post to be offered to Shrewsbury Area Deanery Lay Chairs for their joint agreement as to who should become a lay member of the ShAMPC
  - iii. The four remaining memberships (two clergy, two lay) shall be nominees of the Area Bishop and/or Archdeacon, taking account, if possible, of the demographic spread of the archdeaconry.
5. If any of the above memberships cannot be filled as described in (i), (ii) or (iii) above, the Area Bishop and/or Archdeacon may nominate to fill the post to meet the requirements of balance.

In attendance:

- The Minutes Secretary
- The Diocesan Pastoral Officer

### Procedures and practice of ShAMPC

**Term of office** - Bishop's Council members will be reviewed at the triennium. For nominated members, their membership will be reviewed every three years by the Area Bishop.

**Attendance** - A quorum will be 50% of the ShAMPC membership, which must include one ex-officio member. The Chair may have a casting vote.

**Note:** Rural Deans may be substituted by Assistant Rural Deans and Lay Chairs by Assistant Lay Chairs. However assistants do not have voting rights. Their presence is to ensure continuity of communication.

Rural Dean or Lay Chair may request that their assistant becomes the formal replacement for them on the Committee and the AMPC will consider such a request. If agreed the assistant will have voting rights.

Non-member Rural Deans/Lay Chairs may be invited to attend meetings relating to matters affecting their specific deaneries but shall not have a vote.



**Frequency of Meetings** - At least four times each year. The dates of meeting to be decided in the light of the dates of meeting of the LDMPC.

## Stafford Area Mission and Pastoral Committee (StAMPC)

1. Reviewed by StAMPC on 06/05/21, agreed to add the Associate Archdeacon of Stoke-upon-Trent to the membership of this committee and to amend the deanery name in cluster 4. Approved by DMPC on 26/05/21 and Diocesan Synod on 28/07/21.

### Membership of StAMPC

1. The Bishop of Stafford (ex-officio and Chair)
2. The Archdeacon of Stoke-upon-Trent (ex-officio)
3. The Associate Archdeacon of Stoke-upon-Trent (ex-officio)
4. A Lay Chair from each Deanery Cluster (see note below)
5. A Rural Dean from each Deanery Cluster (see note below)

In attendance:

- The Minutes Secretary
- The Diocesan Pastoral Officer

### Procedures and practice of StAMPC

#### Attendance

Not less than two thirds of the voting membership of the Committee which must include one ex-officio member.

**Note:** Each Rural Dean/Lay Chair would serve for five years or until he/she ceases to occupy that office, passing membership on to the next Rural Dean/Lay Chair in the Cluster in alphabetical order.

The Deanery Clusters are: (1) Eccleshall, Stafford and Stone (2) Tutbury and Uttoxeter (3) Alstonefield, Cheadle and Leek (4) Newcastle, Stoke-on-Trent.

#### Frequency of Meetings

At least four times each year. The dates of meeting to be decided in the light of the dates of meeting of the LDMPC.

## Wolverhampton Area Mission and Pastoral Committee (WAMPC)

1. Reviewed by WAMPC on 20/09/21 and agreed to keep the constitution the same.

### Membership of WAMPC

1. The Bishop of Wolverhampton (ex-officio)
2. The Archdeacon of Walsall (ex-officio)
3. The Archdeacon of Lichfield (ex-officio and Chair)
4. The Rural Deans of the Episcopal Area (10)
5. The Lay Chairs of the Episcopal Area (10)

#### In attendance:

- The Minutes Secretary
- The Diocesan Pastoral Officer

**Note:** Rural Deans may be substituted by Assistant Rural Deans and Lay Chairs by Assistant Lay Chairs. However, assistants do not have voting rights. Their presence is to ensure continuity of communication. Rural Dean or Lay Chair may request that their assistant becomes the formal replacement for them on the Committee and the AMPC will consider such a request. If agreed the assistant will have voting rights.

**Procedures and practice of WAMPC**

**Attendance** - Not less than 50% (11 members) of the voting membership of the Committee including at least one of the Bishop and the Archdeacons.

**Frequency of Meetings** - At least four times each year. The dates of meeting to be decided in the light of the dates of meeting of the LDMPC.

## Constitution of the Closing and Closed Churches Group (CCCG)

A permanent sub-committee of the LDMPC.

The purposes of the LDMPC are set out in the Mission and Pastoral Measure 2011 and reflected in the Constitution. The main aim is to consider the provision of pastoral care across the diocese so that the mission of the Church of England can go forward. From time to time the LDMPC may create sub-committees or working parties on either a permanent or temporary basis to enable the LDMPC to discharge its duties more effectively.

The LDMPC delegates to the CCCG its responsibilities with regard to process and practice as set out below. The LDMPC approves plans, draft proposals and schemes for closure in accordance with its constitution and makes recommendation to the Bishop as required. The LDMPC also approves any plans for alternative use of closed churches. Details of the processes required are set out in the Mission and Pastoral Measure 2011 Volume 2 – Dealing with Consecrated Church Buildings.

Any of the matters that are delegated to the CCCG may also be initiated by the LDMPC.

1. The CCCG draws together the various roles and responsibilities for the process of closing churches, looking after those that are taken out of use for public worship and seeking alternative appropriate use for closed buildings.
2. Membership
  - a. Chair – Archdeacons on a rota basis.
  - b. The Archdeacons – Julian Francis, Megan Smith, Paul Thomas & Sue Weller
    - i. In the absence of an Archdeacon the Bishop may nominate someone to represent the Archdeaconry (approved by LDMPC on 03/12/20).
  - c. The Diocesan Pastoral Officer – Clare Beavon
  - d. The Diocesan Secretary – Julie Jones
  - e. The Director of Finance – Jonathan Hill (or their delegated representative)
  - f. The Director of Property – Simon Ray (or their delegated representative).
  - g. One person appointed by the LDMPC/Bishop's Council – Josephine Locke (approved by LDMPC on 08/02/17)
  - h. Andy Mason (co-opted) - Director of Glebe and Church Buildings Strategy (approved by LDMPC on 03/12/20)

The CCCG may co-opt others either permanently (with the approval of the LDMPC) or temporarily for specific projects.

The members of the CCCG to appoint a chairperson for the Group who may be a member of the Group as set out above or a co-opted member approved by the LDMPC.

The chair of the LDMPC may attend any meeting of the CCCG.

The CCCG will meet four times per year.

### 3. Responsibilities

1. To oversee and enable the process of informal consultation regarding potential closure of a

- church building whether consecrated or un-consecrated.
2. To provide advice and support to parishes, deaneries and the Diocesan Trust in the process of informal consultation.
  3. To arrange for CBC (Church Buildings Council) Reports to be obtained with respect to any building considered for closure and to consider such a report in liaison with the parish, deanery and relevant Area Mission and Pastoral Committee.
  4. To submit CBC reports and any comments or other considerations to the LDMPC.
  5. To assist the AMPCs in considering potential closure especially by providing:
    - a. information regarding financial implications of closure
    - b. information regarding potential other uses of the building
  6. To assist the AMPCs in preparing draft proposals and in the associated consultation process. In particular the CCCG will advise on when this process should commence in the light of informal consultations already undertaken. (The Church Commissioners take account of the informal consultations undertaken when they consider any objections to closure).
  7. To ensure that all statutory interested parties are included in any consultation.
  8. To advise the AMPCs and LDMPC whether any person or body with a recognised interest should be treated as a "non-statutory" interested party.
  9. To gather material and evidence to support any case before the Church Commissioners Pastoral Committee.
  10. To give advice at any stage on potential alternative uses of closed buildings to parishes, deaneries, AMPCs, LDMPC and any others.
  11. To oversee the care of closed buildings which have become the responsibility of the LDBF.
  12. To liaise with the Church Commissioners (CC) with respect to alternative use seeking.
  13. Report to the LDMPC regarding potential alternative use and also cases where an alternative use has not been found or is unlikely to be found so that the LDMPC can report this to the CC for their decision regarding the future of the building (Code V2. 13.4).
  14. To report to LDMPC annually regarding the discharge of its responsibilities and to do so in such a way that this contributes to the LDMPC annual report to the Diocesan Synod and the LDMPC annual report to the CC on the exercise of its use seeking functions under s.3(3)(e).
  15. To report to the LDMPC in such a way as to enable it to make its six monthly report to the CC in respect of each closed church building.
  16. The CCCG may delegate any of these responsibilities to any individual member or group of members. The exercise of delegated responsibilities to be reported to the CCCG and/or the chair of the CCCG as appropriate.

## Lichfield Diocesan Advisory Committee (DAC)

A statutory committee established by earlier legislation and currently formed under the provisions of the Care of Churches and Ecclesiastical Jurisdiction Measure 1991

### Role/Terms of Reference of the DAC

The functions of a Diocesan Advisory Committee shall be—

1. to act as an advisory body on matters affecting places of worship in the diocese and, in particular, to give advice when requested by any of the persons specified in paragraph 2 below on matters relating to—
  - a) the grant of faculties;
  - b) the architecture, archaeology, art and history of places of worship;
  - c) the use, care, planning, design and redundancy of places of worship;
  - d) the use and care of the contents of such places;
  - e) the use and care of churchyards and burial grounds;
2. to review and assess the degree of risk to materials, or of loss to archaeological or historic remains or records, arising from any proposals relating to the conservation, repair or alteration of places of worship, churchyards and burial grounds and the contents of such places;
3. to develop and maintain a repository of records relating to the conservation, repair and alteration of places of worship, churchyards and burial grounds and other material (including inspection reports, inventories, technical information and photographs) relating to the work of the committee;
4. to issue guidance for the preparation and storage of such records;
5. to make recommendations as to the circumstances when the preparation of such a record should be made a condition of a faculty;
6. to take action to encourage the care and appreciation of places of worship, churchyards and burial grounds and the contents of such places, and for that purpose to publicise methods of conservation, repair, construction, adaptation and re-development;
7. to perform such other functions as may be assigned to the committee by any enactment, by any Canon of the Church of England or by resolution of the diocesan synod or as the committee may be requested to perform by the bishop or chancellor of the diocese.

### Membership of the DAC

Defined in Care of Churches and Ecclesiastical Jurisdiction Measure 1991 Schedule 1.

1. The committee shall consist of a Chair, the archdeacons of the diocese and not less than twelve other members.
2. The chairman shall be appointed by the bishop of the diocese after consultation with the bishop's council, the chancellor and the Council for the Care of Churches.
3. The other members shall be—
  - a) two persons appointed by the bishop's council of the diocese from among the elected members of the diocesan synod of the diocese;
  - b) not less than ten other persons appointed by the bishop's council of the diocese, of whom one shall be appointed after consultation with the Historic Buildings and Monuments Commission for England, one shall be appointed after consultation with the relevant associations of local

- authorities and one shall be appointed after consultation with the national amenity societies;
- c) such other persons as may be co-opted under paragraph 12 below.
4. In making appointments under paragraph 4(b) above, the bishop's council shall ensure that the persons appointed have, between them, -
    - a) knowledge of the history, development and use of church buildings;
    - b) knowledge of Church of England liturgy and worship;
    - c) knowledge of architecture, archaeology, art and history; and
    - d) experience of the care of historic buildings and their contents.
  5. The first appointment of the chairman and other members of the committee under paragraph 4(a) and (b) above shall take place as soon as practicable, and subsequent new appointments of the chairman and those members shall be made within the period of one year following the formation of the second new diocesan synod after the latest appointments.
  6. The term of office of the chairman and any other member of the committee appointed under paragraph 4(a) or (b) above shall be the period from his/her appointment to the making of new appointments in accordance with paragraph 6 above.
  7. A member of the committee who ceases to hold a qualification by virtue of which he/she became a member shall thereupon cease to be a member.
  8. A member of the committee who ceases to hold office otherwise than by virtue of paragraph 8 above shall be eligible for re-appointment.
  9. Where a casual vacancy occurs among the chairman and other members of the committee appointed under paragraph 4(a) or (b) above, the bishop shall appoint a person to fill the vacancy, and if the person whose place is to be filled was a member of the committee by virtue of his/her membership of the diocesan synod of the diocese the person so appointed shall also be a member of that diocesan synod.
  10. Any person appointed to fill a casual vacancy shall hold office only for the unexpired portion of the term of office of the person in whose place he/she is appointed.
  11. With the consent of the bishop of the diocese, the committee may from time to time co-opt such persons (of a number not exceeding one third of the total number of the other members) as it thinks fit to be additional members of the committee, but any person so co-opted shall cease to be a member of the committee on the making of new appointments of members in accordance with paragraph 6 above.

### Miscellaneous

12. The bishop of the diocese may appoint suitably qualified persons to act as consultants to the committee if the committee so request.
13. The secretary to the committee shall be appointed by the bishop of the diocese after consultation with the chairman of the committee and the chief administrative officer of the diocese.
14. In this constitution "national amenity society" has the same meaning as in the Care of Churches and Ecclesiastical Jurisdiction Measure 1991.
15. In paragraph 4(b) above "relevant associations of local authorities" means such associations as

may from time to time be designated by the Dean of the Arches and Auditor as the relevant associations of local authorities for the purposes of this Schedule in relation to the diocese concerned.

### **Ex-officio**

The Archdeacons (four)

### **Nominated**

1. Architect member (Lichfield AD)
2. Architect member (Walsall AD)
3. Architect member (Stoke AD)
4. Architect member (Salop AD)
5. Clergy Member (Lichfield AD)
6. Clergy member (Walsall AD)
7. Clergy member (Salop AD)
8. Clergy member (Stoke AD)
9. Diocesan Synod Lay Member
10. English Heritage nominated member
11. Amenity Societies nominated member
12. Local authorities nominated member
13. Archaeological Adviser member
14. DAC Secretary and Co-opted member

### **Procedure and practice for DAC meetings**

10 meetings a year (no meeting in August or December) Details of the year's meeting dates and deadline for papers are posted on the DAC pages of the diocesan website.



## Vacancy in See Committee (VIS)

### Origin of VIS

A committee established under the Vacancy in See Committees Regulation 1993 (as amended)

A Vacancy in See Committee is required to be in existence at all times in every diocese. The Committee only meets when there is a vacancy in the See. In other words, in the case of the Diocese of Lichfield, when the post of Bishop of Lichfield has become vacant. The Committee holds at least two meetings, the first of which is held as soon as practicable after the vacancy has been announced. At its second meeting the Committee discusses the needs of the diocese. It then prepares a statement setting out those needs and sends it to the Crown Nominations Commission of the General Synod, together with such factual information about the diocese and its organisation as the Commission may have requested.

The Committee elects by ballot from amongst its members, persons to be members of the Crown Nominations Commission. Such election is normally taken as the final business of the second meeting of the Committee, and is conducted by the method of the single transferable vote in accordance with the Regulations of the General Synod currently in force. Not less than half of the members elected must be lay members of the Committee.

### Membership

1. The Area bishops (3 seats)
2. The Dean (1 seat)
3. Two Archdeacons (to represent the archdeacons in the diocese) (2 seats)
4. The proctors elected by the diocese to the Lower House of Convocation of the General Synod (currently 6 seats)
5. The members of the House of Laity of the General Synod elected by the diocese (currently 6 seats)
6. The Chairmen of the House of Clergy and of the House of Laity of the Diocesan Synod (2 seats)
7. Elected membership: 2 clerical and 7 lay (total: 9 seats)
8. Up to 4 nominations by the Bishop's Council

### Procedure and practice for VIS meetings

Two meetings are held during the vacancy to elect diocesan representatives to the Crown Nominations Committee. The VIS Committee also oversees the preparation of the diocesan Statement of Needs.

The procedure for the formation of a new Committee is set out in the Regulation. The Committee is reconstituted after the election of a new diocesan synod. The elected and nominated members of an existing Vacancy in See Committee continue in office until 31 December of the year in which a new diocesan synod is elected. This ensures that there is always a full complement of Committee members in place whenever a vacancy occurs.

Where a Vacancy in the See occurs and a Committee has begun its work, the Committee membership as convened shall continue to serve, irrespective of the election of new members following a diocesan synod election.

## Finance and Asset Management Committee (FAM)

(formerly FACS)

A non-statutory sub-committee of Bishop's Council. Established 2003/4.

### Role/Terms of Reference of FAM

1. To oversee the management of diocesan finances and Assets on behalf of the members of Bishop's Council (in their role as directors of the Diocesan Board of Finance) by:
2. Reviewing the draft annual Budget for presentation to the Council ensuring that it has been prepared in accordance with the policy guidelines set down by the Council and by Synod
3. Monitoring on a regular basis the current year's income and expenditure drawing to the attention of the Council any significant variances
4. Reviewing the draft annual DBF Report and Accounts prior to their approval by the Council and Synod
5. Monitoring the receipt of parish shares, to deal with issues arising from the Share process, to approve applications for arrears write-offs and, as necessary, to develop changes in the Common Fund formula and administration for approval by the Council.
6. Acting as the delegated committee that scrutinises work under both the Parsonages Measure and the Glebe Measure; overseeing the work of both the Property and Glebe operating groups and approving strategic recommendations from these groups.
7. Receiving reports from the following sub-committees/operations groups
  - a. Budget Review Group (BRG)
  - b. Diocesan Investment Group (DIG)
  - c. Glebe Operations Group
  - d. Property Operations Group
  - e. DBE Committee
  - f. Parish Assessors (PASC)
  - g. Trusts, Projects, Loans and Grants (TPLG)
  - h. Pay and Conditions (PACS)
  - i. Risk and Audit Committee (RAC)
  - j. SCRC (Shallowford House)
  - k. Dovedale House
8. Preparing and keeping under constant review the five-year financial forecast including the management of diocesan reserves.
9. Overseeing, on behalf of the Council the investments of the diocese
10. Undertaking regular reviews of major risks facing the Council and to develop appropriate risk policies
11. Looking for ways of improving the communication of financial information to parishes
12. Carrying out such other financial tasks in relation to diocesan finances as the Bishop's Council shall direct by the Council.

### Membership of FAM

- Chair of Lichfield Diocesan Board of Finance (Chair of Committee by virtue of office)
- Deputy Chair of the Lichfield Diocesan Board of Finance (also Chair of TPLG)
- The Diocesan Bishop
- An Archdeacon
- Chair of Property Operations Group
- Chair of Glebe Operations Group

## Governance 2021

- Chair of Parish Assessors Committee
- Chair of Diocesan Investment Group
- Chair of Risk and Audit Committee
- Chair of the DBE Committee
- Representative of St Chads Retreat Centres
- One member nominated by Bishop's Council
- The committee can co-opt up to 3 further members with appropriate gifts and skills.

### In attendance

- Diocesan Secretary
- Finance Director
- Deputy Finance Director

## Procedures and practice for meetings of FAM

1. Meets 5 – 6 times a year (usually January, April, July, September and November approx.)
2. Finance Department prepares Agenda and related papers and email out one week in advance.
3. Officer for Governance to minute – aiming for clarity and properly identified actions for follow up.
4. Reports of the meetings of FAM will be reviewed by Bishop's Council (acting in their capacity as Directors of the LDBF) annotated under three headings
  - a. for noting
  - b. for ratification
  - c. for discussion and decision
5. It is anticipated that unless due notice is given by a Council member, items within the first two categories will not be re-debated by Bishop's Council

## Budget Review Group (BRG)

### Origin of BRG

A committee which reports to FAM

### Role/Terms of Reference of BRG

1. To oversee the construction of the Diocesan Budget and ensure that there is synergy between Diocesan Strategy and Finance
2. Specifically address:
  - a. recommending the increase in Parish Share
  - b. increase in stipends and salaries
  - c. ensuring the diocese remains financially sustainable
  - d. setting budgets for each area of work
3. To consider any applications for additional work and expenditure
4. To oversee the Mission Development Fund.
5. To oversee the 'Resourcing The Future' Budget and making recommendations to FAM and Council.

### Membership of BRG

1. The Chair of the Diocesan Board of Finance
2. The Deputy Chair of the Diocesan Board of Finance
3. The Diocesan Secretary
4. The Finance Director

The Chair of the Board of Finance chairs this committee.

The Group is serviced by a member of the Finance Department

### Procedures and practice for meetings of BRG

#### Frequency of meetings

Holds two meetings a year –

1. In March to set the parameters for the preparation of the following years Budget
2. In August to set the Budget for the following year for consideration by Bishops Council and approval by Diocesan Synod

Note: Other matters may arise that can either be dealt with by email or a special meeting is called to discuss the issue.

#### Attendance

The quorum will be four – if any member listed above cannot be present a deputy shall be assigned.

#### Accountability

The Group will be accountable to the Finance and Assets Management Committee

## Diocesan Investments Group (DIG)

### Origin of DIG

The Investments Group is a working group of the Finance and Assets Management Committee (FAM), from which it derives its authority.

### Role/Terms of Reference of DIG

The role of the Diocesan investment group is to look after the Investments and Assets of the Board of Finance on behalf of FAM. The need for such a group was identified by the Future Planning Working Party who met through out 2003 to give an overview of the Diocesan finances and identify weaknesses in managing assets and decision making on financial issues. In accordance with the Bishop's Council review of terms of reference the objectives for DIG are as follows below.

### Objectives of DIG

1. To set up and regulate the Diocesan Investment Policy
2. To agree the asset allocation to maximise the Total Annual Return
3. To manage the Pastoral and Diocesan Stipend Fund and capital asset expenditure
4. To
  - a. carry out investment proposal
  - b. recommend on acquisitions and disposals of houses and developments
5. To appraise investment proposals from Glebe Operations group and make recommendations on Glebe Developments
6. To draw up and manage a policy on the appropriate level and portfolio of reserves the diocese should hold in order to ensure its long-term viability
7. To draw up a set of simple 'Financial Regulations' for the management of Diocesan assets which will enable the Bishop's Council to monitor key financial trends and for the Board's Senior Officers to manage with confidence within clearly defined boundaries of authority

### Membership of DIG

1. The Deputy Chair of the DBF
2. The Chair of the DBF
3. Three other members of which at least one must be a member of Bishop's Council\*
4. The Director of Finance
5. Diocesan Chief Executive Officer
6. Optional 2 co-opted members \*\*

\*Bishop's Council member will hold membership until the date of Council elections. Council will elect a representative at their first meeting of the new triennium.

\*\* Members should serve an initial term of 3 years and any subsequent re-election will be for a term of 3 years up to a maximum of 9 years. Specific gifts and skills in asset management and investment would be desirable.

One of the members of DIG shall be chosen by FAM to chair the DIG. The term of office shall be three years. At the end of the term of office the incumbent Chair may stand for up to a further two terms of three years but must then retire from the role of Chair for at least a period of three years.

### Procedures and practice for meetings of DIG

The Group would be serviced by a member of the Finance Department

Governance 2021

### **Frequency of meetings**

A minimum of three times a year.

### **Attendance**

The quorum will be four

### **Accountability**

The Group will be accountable to the Finance and Assets Management Committee

# Glebe Operations Group

## Terms of Reference

- To maximise Glebe Land Rental
- To keep up to date the Glebe Land Register
- To identify potential Glebe Land Development and prepare reports to the Investment Group
- To maintain the Glebe Land and maximise the overall potential

## Frequency of meetings

A minimum of twice a year.

## Attendance

The quorum will be four

## Accountability

The Group will be accountable to the Finance and Assets Management Committee

## Membership of Glebe Operations Committee

- A Chair (appointed by the diocesan Bishop)
- An Archdeacon – the choice of attending Archdeacon would be determined by themselves by rota
- One member of FAM

In attendance

Dio Sec

Glebe Consultant

Director of Finance

Land agent

# Property Operations Group

Terms of reference

- To be responsible for the maintaining of the diocesan housing stock
- To identify vacant houses and maximise rental income
- To identify surplus housing stock and prepare report to the Investment Group
- To identify potential development plots and prepare report to the Investment Group
- To oversee and remain in budget any capital expenditure approved by FACS/DIG
- To oversee the acquisition and disposal of property once the relative authorisation has been received.

Chair: To be appointed by FAM

## Elected members :

*One cleric and one lay person*

## In attendance:

- *Dio Sec*
- *Director of Finance*
- *Head of Property services*
- *Diocesan Surveyor*
- *Archdeacons when required for specific issues*

## Frequency of meetings

A minimum of four a year.

## Attendance

The quorum will be four

## Accountability

The Group will be accountable to the Finance and Assets Management Committee

# Trusts Projects Loans and Grants Committee (TPLG)

## Origin of TPLG

The Trusts Loans and Grants Committee is a working group of the Finance and Assets Management Committee (FAM), with delegated authority as set by FAM. Previously known as Resourcing Parish Mission (RPM).

## Role

To review all existing parish and associated loans approved by the Board of Finance. In addition, the group will review, assist and identify all parishes with existing and proposed projects taking into consideration financial constraints, Mission and Ministry opportunities and other resources available. The Committee will look at new loan applications and possible grants that may be available to a particular project including considering small support grants to enable projects to access larger grants.

## Terms of Reference

To oversee the management of diocesan and parish projects, parish trusts (Lichfield Diocesan Trust) and Mercian Community Trust; loans and specific grants on behalf of FACS.

## Objectives

### Diocesan Trust

1. To oversee parish trusts that are held in the name of the Lichfield Diocesan Trust as Custodian Trustees
2. To review applications for release of capital from the Trust Funds in the role as Custodian trustees
3. To review requests to vary or widen Trust Deeds.
4. To oversee the Diocesan Gift Aid Scheme

### Mercian Community Trust

1. To act as Trustees and Directors of the Mercian Community Trust and oversee projects that fall under the umbrella of the Registered Charitable Company
2. To act as Members of Transforming Communities Together
3. To review applications from projects to join the Mercian Community Trust Umbrella.

### Loans

1. To review and regulate the Diocesan Loan Policy; including the criteria
2. To review all the current loans on a regular basis and highlight any concerns that may arise from the reviews to FACS
3. To consider all future Loan Applications and approve loans up to £50k and make



recommendations to FACS for loans in excess of £50k; Bishops Council for loans in excess of £150k

## Projects

1. To review existing and proposed projects, with particular concern to financial, mission and ministry and resources constraints and opportunities.
2. To review and oversee participation audits
3. To identify mentors and arrange for persons, where applicable to be placed on project management committees as observers and to offer assistance where applicable
4. To help identify potential funding streams and grant making applications
5. To create a project planning and management guidebook

## Grants

1. To review and regulate the Diocesan Grant Policy; including the criteria
2. To consider financial support in assisting in finding alternative use for Church Buildings.
3. Any other project, loans or grant work delegated by FAM.

## Membership

- Chair\* (Deputy Chair of The Board of Finance)
- Archdeacons
- The Chair of the Parish Assessors \*(or a nominated Assessor on behalf of the Chair\*\*)
- The Diocesan CEO
- The Director of Finance
- A representative from the DAC
- 2 Member of Bishop's Council (at least 1 must be Clergy)
- Optional 3 co-opted members (at least 1 must be Clergy)

\* FAM Members

\*\* The Chair of Parish Assessors may annually nominate a representative.

Members should serve a term of 3 years and retirement is by rotation (Specific gifts and skills in project management would be desirable)

In attendance:

- Parish Project Support Officer
- Deputy Director of Finance
- DAC Secretary
- Relevant Diocesan Officer
- Company Secretary to the Diocesan Trust

The Group is serviced by a member of the Finance Department

## Frequency of meetings

A minimum of three times a year.

## Attendance

The quorum is six members (or seven when all co-opted places are filled)

## Accountability

The Group is accountable to the Finance and Assets Management Committee

All applications will need to pass five tests:

1. **Relevance** - that applications come within the indicated criteria

2. **Competence** - that the form has been filled in and any supplementary questions answered in such a way as to convince the grant-making group that the applicant has a fair chance of delivering the project competently.
3. **Plausibility** - that the applicant has established a plausible route by which the proposal could result in the growth of the church.
4. **Comprehensiveness** - that the applicant has answered all the questions on the form (plus any supplementaries) in such a way as to give the grant-making group a clear and full picture of your intentions.
5. **Sustainability** – that the larger, longer term projects show how the applicant might keep the project going once our funding has finished or personnel have moved on.

## Parish Loans and Grants Loans

1. To review and regulate the Diocesan Loan Policy
2. To review all the current loans on a regular basis and highlight any concerns that may arise from the reviews to FAM
3. To consider all future Loan Applications and approve loans up to £50k and make recommendations to FAM for loans in excess of £50k
4. Loans in excess of £150k will be initially approved at RPM, then FAM before final approval at Bishops Council

## Projects

1. To review existing and proposed projects, with particular concern to financial, mission and ministry and resources constraints and opportunities.
2. To review and oversee participation audits
3. To identify mentors and arrange for persons, where applicable to be placed on project management committees as observers and to offer assistance where applicable
4. To help identify potential funding streams and grant making applications
5. To create a project planning and management guidebook

## Grants

1. To consider support set up grants, including contributions of up to 10% in order to gain larger grants
2. To consider financial support in assisting in finding alternative use for Church Buildings.
3. Any other project, loans or grant work delegated by FAM.

## Parish Assessors Sub-Committee (PASC)

(Unless and until decided otherwise by the Finance and Assets management Committee (FAM), the name shall be "Parish Assessors Sub-Committee" (PASC)

### Origin of PASC

PASC is a sub-committee of FAM, which itself is a committee reporting through Bishop's Council to the Diocesan Board of Finance. PASC lies within the Parish Resources section of the diocese.

PASC is accountable to FAM which is its immediate reporting line.

### Role/Terms of Reference of PASC

- To ensure that money and mission are mutually supportive
- To see that the total share is levied in a fair way
- To maximise the income from Parish Share in a fair way
- To help Parishes meet the challenge of responding to their Share commitment
- To monitor the working of the Parish Share formula and provide feedback, including suggestions for change, to FAM via the STG
- To assist in promoting the Diocesan objectives/vision/strategy

### Level of Authority

Any authority held by PASC is delegated from FAM and may be amended by FAM at any time.

Archidiaconal sub-groups may agree write-offs, including reductions from calculated Share, up to £7499 in any rolling three-year period per Parish, with each write-off being advised to FAM for noting.

Proposed write-offs from £7,500 to £20,000 must be submitted to FAM and if approved must be advised to Bishop's Council for noting.

Any proposed write-offs over £20,000 must be submitted to Bishop's Council for approval.

### Membership of PASC

#### Ex-officio

- The Archdeacons of the diocese

Recruitment of other members shall be from suitably qualified laity & retired clergy. The number of members and their assignment to a particular Archdeaconry shall be determined by FAM, as needs demand.

Any person nominated (normally via an Archdeacon) to be a member of PASC shall be considered by FAM and, if thought suitable for the role, shall be appointed by FAM.

Appointment of Parish Assessors shall initially be for a period of six years. They can then be re-appointed for further terms of three years with the approval of FAM.

### Archidiaconal Sub-groups

Members shall primarily work in the Archdeaconry to which they have been assigned, under the direction of the relevant Archdeacon. However, they may be called upon to work in other Archdeaconries as the need demands.

### Chair

One of the members of PASC shall be chosen by FAM to chair the PASC. The term of office shall be three years. At the end of the term of office the incumbent Chair may stand for up to a further two terms of three years but must then retire from the role of Chair for at least a period of three years.

If FAM does not consider that a particular Chair is carrying out the role to the satisfaction of FAM and passes a vote of no confidence in the Chair, then that person may be removed from office with no further reason given.

The Chair shall be an ex-officio member of FAM but will not be eligible to vote on any matter concerning the conduct of their own Chairmanship.

## Procedures and practice for meetings of PASC

### Meetings

There shall be a minimum three plenary meetings of PASC at approximately four monthly intervals. Venues will be decided as appropriate.

The number of Archidiaconal meetings shall be as determined by the relevant Archdeacon and shall include the annual Archdeacon's Consultation meeting. Such meetings shall normally take place at the relevant Archdeacon's Office, but other venues may be chosen if required.

In order for the plenary meetings of PASC to be quorate, at least one-half of the members, including one Parish Assessor from each Archdeaconry, must be present.

There shall be an open invitation for the Chief Executive Officer and the Finance Director to attend any PASC meeting should they so wish.

### Secretariat

The Parish Share Officers (PSO) from St Mary's House shall provide Secretariat services for PASC meetings.

### Strategic Thinking Group

The PASC shall maintain a Strategic Thinking Group (STG). Its purpose will be to monitor the effectiveness of the then current Parish Share formula; to devise (if thought necessary) any amendments to the formula; to consider ways of increasing the percentage of Parish Share collected; to consider any relevant issues affecting the calculation and collection of Parish Share that PASC or FAM may put to it, and to keep under review the Terms of Reference by which PASC is governed. Membership shall include a small number of PASC members (including the Chair) and the Finance Director.

# Pay and Conditions Committee (PACS)

## Origin of PACS

A committee which reports to FAM

## Role/Terms of Reference of PACS

- To oversee the pay and conditions of all lay staff, ensuring consistency and fairness in both St Marys House and the satellite offices by:
- approving annual cost of living awards
- considering individual merit awards
- To consider annual stipend rates set by the national church and to decide Lichfield's response.
- To oversee Stipend Payment Policies for the clergy across the diocese.
- To administer central sector ministry staff salaries and housing allowances.

## Membership of PACS

- The Chair of the Diocesan Board of Finance (Chair by virtue of office)
- The Deputy Chair of the Diocesan Board of Finance
- The Diocesan Bishop
- The Diocesan Chief Executive
- The Finance Director
- One additional member with relevant skills, appointed by FAM, although not necessarily a member of FAM

## Procedures and practice for meetings of PACS

Holds two meetings a year –

- In December to discuss an annual pay award.
- In August/September to award merit acknowledgements

Note: This latter might easily be carried out and agreed by email. Other issues that arise may be dealt with by email or a special meeting is called to discuss the issue.

# Risk and Audit Committee

## Accountability and Origin

The Group will be accountable to the Finance and Asset Management Committee. It is an expansion of the current Risk Assessment Working Group to encompass Internal and External Audit procedures.

## Role/Terms of Reference of Risk and Audit Committee

- To identify and manage the Diocesan Risk Register
- To make recommendations to FAM and other bodies on High-Risk areas
- To recommend to FAM appropriate procedures and internal controls to minimise risk to the Board
- To review any matters relating to the appointment of the external auditors for the diocese, the audit fee and any questions of resignation or dismissal.
- To discuss with the external auditors before the audit commences the nature and scope of the audits, including changes from statutory or regulatory requirements
- To review draft year end accounts and financial statements of the Diocesan Board of Finance and other Diocesan accounts, and to facilitate the finalisation of the accounts for review by members of FAM before their meeting. To assist the Finance Director with the implementation of changes to accounting policies and practice.
- To review and discuss with the auditors any changes to the accounting policies and practices or methods of presentation.
- To discuss problems and reservations arising from the audits and any matters the auditors may wish to discuss including a meeting with the auditors, without management present, to take place each April as a minimum and at such other times as the Committee wishes.
- To review the external auditors' management letters and the respective management response.
- To review and report upon the internal financial and non-financial control policies
- To consider other topics that Council or FAM request or the Committee think appropriate.

## Membership of Risk and Audit Committee

- An elected member of FAM to Chair the meeting
- Chair of the Lichfield Diocesan Board of Finance
- Deputy Chair of the Lichfield Diocesan Board of Finance
- Chair of the DBE Committee
- Chief Executive Officer
- Finance Director
- A member of Bishop's Council

(One of the above to have affiliation to the Board of Education)

## Procedures and practice for meetings of Risk and Audit Committee

Meets three times a year as required

- March – to review the Audit Report and draft Annual Accounts
- December/January –Pre Audit meeting for the Diocesan Board entities.

The Committee is administered by the PA to the CEO

# Safeguarding Scrutiny Panel (SSP)

A group approved by Synod

## Terms of Reference of SSP

- The development of policy, procedures and good practice guidelines which includes:
  - keeping well informed and up to date with the development of government policy, church policy and good practice;
  - developing and regularly reviewing the diocesan safeguarding children policy, ensuring that it is easily accessible and understandable to licensed and paid workers and to volunteers.
  - ensuring each parish has adopted and implemented the diocesan policy and procedures;
  - monitoring and checking parish policies and providing advice and guidance on these;
  - briefing the national adviser on all cases which go to public court or tribunal or which draw media attention.
- Receiving regular reports from the Bishop's Safeguarding Adviser, the Diocesan Advisor for the safeguarding of children and the Diocesan Advisor for the safeguarding of vulnerable adults.
- Overseeing the development of parish training
- Having a strategy for dealing with specific crisis incidents in place
- Ensuring all appropriate statutory relationships are in place
- Overseeing arrangements for DBS
- Ensuring arrangements are in place for risk assessment and risk management
- Ensuring Archdeacons include monitoring the implementation of parish safeguarding policies, procedures and good practice in their visitations.

## Membership of SSP

- An independent Chair appointed by the Diocesan Bishop
- An Area Bishop nominated by the Diocesan Bishop
- The Diocesan Chief Executive
- The Bishop's Chaplain
- The Bishop's Safeguarding Adviser
- The Diocesan Advisor for the safeguarding of children
- The Diocesan Advisor for the safeguarding of vulnerable adults
- The Diocesan Registrar
- The Diocesan Youth Officer
- The Diocesan Director of Communications
- A representative of the Cathedral
- Representatives of the police and social services

## Meetings

The Group meets quarterly

## Accountability

The Group submits an annual report to the Diocesan Synod's October session.

## St Chad's Retreat Centres

A company limited by guarantee.

The objects and powers are detailed in the Memorandum and Articles of Association; company registered as number 8922281 on 4 March 2014 and updated in 2019.

### Role/Terms of reference of St Chad's Retreat Centres

The objects of the charity are the advancement of the Christian religion in accordance with the doctrines and principles of the Church of England, in particular (ut not limited to) by the provision and maintenance of retreat centres to:

- i. Promote Christian spiritual and religious teaching and education generally;
- ii. Provide hospitality in the Christian tradition; and
- iii. Promote, protect and preserve spiritual, emotional and psychological health and wellbeing.

### Directors/Trustees of St Chad's Retreat Centres

There will be at least five trustees and no more than eight appointed as below –

- two Trustees nominated by the sole member (Lichfield Diocesan Board of Finance)
- further Trustees appointed by the existing Trustees, subject to the prior approval of the Member and maximum number permitted.

The Chair is appointed by the Trustees from the body of Trustees.

### Procedures and practice for meetings of St Chad's Retreat Centres

Articles of Association contain membership and practice (copy held)



# DBE Committee

The DBE Committee is the committee of the Diocesan Board of Finance (Board of Finance) established under s.3(7) of the Diocesan Boards of Education Measure 2021 (the 2021 Measure). The DBE Committee exercises the powers and duties conferred on the Diocesan Board of Education (DBE) by or pursuant to the 2021 Measure and which must be delegated to the DBE Committee by the Board of Finance (the DBE Functions).

## Membership of the DBE Committee

The members of the DBE are:

The Bishop

2 members appointed by the Bishop of which one should be either an area Bishop in the Diocese or an archdeacon for an archdeaconry in the Diocese

4 members elected by the Diocesan Synod, of which:

One shall be a clerk in Holy Orders beneficed or licensed in the Diocese,

Two shall be members of the Diocesan Synod,

One shall be a lay person

at least 4 but not more than 5 members co-opted by the DBE of whom 2 members shall be persons with experience of church schools in the Diocese.

## Functions of the DBE Committee

The DBE Committee is established pursuant to s.3(7) of the 2021 Measure to exercise the DBE Functions. The DBE Functions are set out in the 2021 Measure and are:

- To:
  - (a) promote or assist in the promotion of education in the diocese that is consistent with the faith and practice of the Church of England;
  - (b) promote or assist in the promotion of religious education and religious worship in schools in the diocese;
  - (c) promote or assist in the promotion of church schools in the diocese;
  - (d) promote co-operation between itself and other persons concerned with education in the diocese.
- To give Advice in accordance with s.7 of the 2021 Measure;
- To give Consent in accordance with s.8 of the 2021 Measure;
- To take part in a consultation under s.9 of the 2021 Measure;
- To give Directions under s.10 of the 2021 Measure;
- To engage in accordance with s.11 of the 2021 Measure;
- To request information in accordance with s.12 of the 2021 Measure;

- To comply with requirements imposed on it by the code of practice issued by the House of Bishops on safeguarding children and vulnerable adults in accordance with s.13 of the 2021 Measure;
- To enter into the arrangements envisaged in s.14 of the 2021 Measure; and
- To undertake such other functions as may be conferred on the DBE by the Scheme in accordance with s.15 of the 2021 Measure.

## Board of Education Finance Committee (EFC)

### Origin of EFC

A non-statutory sub-committee of Board of Education. Established 2018 following recommendations for the Diocesan Risk and Audit Committee and approved by the Board in June 2018.

### Role/Terms of Reference of EFC

To oversee the management of Diocesan Board of Education finances on behalf of the members of Board (in their role as directors and trustees Diocesan Board of Education) by:

- Monitoring on a regular basis the current year's income and expenditure drawing to the attention of the Board any significant variances
- Reviewing the Annual Budget for presentation to the Board ensuring that it has been prepared in accordance with the policy guidelines set down by the Board of Education or Board of Finance
- To oversee and manage the Investments of the Board of Education and to consider any recommendations by the Diocesan Investment Group and associated investment managers
- Reviewing the draft annual DBE Report and Accounts prior to their approval by the Board
- To follow up and either implement or recommend to the Board of Education any areas raised by the Diocesan Risk and Audit Committee
- To consider Grants and Loan Applications
- To appraise and carry out due diligence on any existing and new areas of work from a financial and business perspective
- To review staffing levels and requirements and oversee Central Education Services.
- To oversee the Accounting Policies and recommend any changes or new policies to the Board.
- Receiving reports from:
  - Christian Distinctiveness Advisers
  - Schools Property Adviser
- Preparing and keeping under constant review the five-year financial forecast including the management of reserves.
- Undertaking regular reviews of major risks facing the Board of Education and to develop appropriate risk policies

- Looking for ways of improving the communication of financial information
- Carrying out such other financial tasks in relation to Board of Education finances as the Board of Education of Finance shall direct.

## Membership of EFC

- Chair of Lichfield Diocesan Board of Education (Chair of Committee by virtue of office)
- Deputy Chair of the Lichfield Diocesan Board of Education
- Chair of the Barchester Committee
- One member elected by the Board of Education for a period of the life of the current Board.
- The committee can co-opt up to 2 further members with appropriate gifts and skills

## In attendance

- Diocesan Director of Education
- Deputy Diocesan Director of Education
- Schools Property Adviser
- Diocesan Director of Finance
- Deputy Diocesan Director of Finance
- DBE Business manager

## Procedures and practice for meetings of EFC

- Meets a minimum of 5 times a year (usually January, April, July, September and November approx.)
- Quorum will be three members in attendance, if at least one of the two co-opted places is filled provided one of the ex officio members is present. If there are no co-opted members the quorum will be two, provided either Chair or Deputy Chair is present.
- Finance Department prepares Agenda and related papers and email out one week in advance.
- Business Manager to minute – aiming for clarity and properly identified actions for follow up.
- Reports of the meetings of EFC will be reviewed by Board of Education (acting in their capacity as Directors of the LDBE) annotated under three headings
  - for noting
  - for ratification
  - for discussion and decision
- It is anticipated that unless due notice is given by a Board member, items within the first two categories will not be re-debated by the Board of Education

## Barchester Committee

### Origin of Barchester

The Barchester Committee is responsible to the Board for providing support and assistance to church schools in the upkeep and improvement of their buildings and sites and to schools that

are subject to reorganisation plans and closures. The Committee participates in the wide range of consultation processes and programmes set up by central and local government in order to preserve and promote church schools.

### Terms of reference:

1. To advise the Board on matters of education legislation and its application to church schools.
2. To exercise the delegated powers to process the transactions listed in paragraphs 3(1), 3(2), 3(3) and 4 of the Diocesan Boards of Education Measure 1991.
3. To advise the Board or EFACS on paragraphs 3(6), 7 and 8 of the Measure.
4. To review and implement the Barchester Scheme, oversee the operation of the Barchester Fund and direct the work of the Schools Buildings Officer.
5. To advise academies (where appropriate) on land and building issues.
6. To consider school organisation issues.
7. To ensure that good liaison is maintained with the Department for Education, the National Society and the local authorities in the diocese.
8. To nominate representatives to the appropriate educational committees and fora of the local authorities of Sandwell, Shropshire, Staffordshire, Stoke-on-Trent, Walsall, Wolverhampton and Telford & Wrekin.
9. To have delegated powers to nominate trustees to school education trusts on behalf of the Board.
10. To take executive decisions on appropriate matters within parameters and terms of reference prescribed by the Committee.
11. To set project management and other fees payable in respect of the Diocese's administration and advisory work relating to capital schemes and land/trust issues.
12. To submit the minutes of its meetings to the Board for ratification.
13. To invite an appropriate number of participant observers to assist in the Committee's deliberations.

### Membership of Barchester

Elected by the Board:

- Chair
- Three Board Members

The Committee to have powers to co-opt:

- One head teacher or member of the senior leadership team of a secondary school or academy
- One head teacher or member of the senior leadership team of a primary school or academy
- Up to three foundation governors (or directors) of any school or academy
- Up to three other persons

### In Attendance:

- Director of Education
- Assistant Director of Education

- Schools Property Adviser
- Legal Secretary
- Treasurer

**Quorum:**

- Four members of the Committee